

LINE 039 1/8"-1/4"

| PRESSURE REGULATORS



GENERAL FEATURES

Aircomp microregulators are available in a wide range of models so as to fulfill several application requirements.

The internal balanced valve guarantees high regulation stability upon variation of the upstream pressure.

An accurate designing of the internal opening system provides regulation speed and big flow rate.

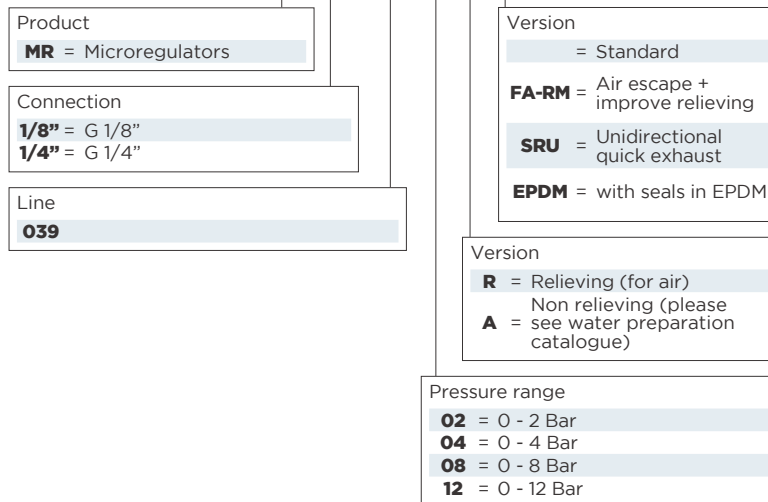
The used polymers and internal components make this product extremely versatile for different applications with compressed air.

GENERAL TECHNICAL DATA

Fluid	compressed air
Working temperature	-5 / +50°C (at temperature lower than (a 10 bar): 2°C air must be dried)
Connections IN-OUT	G1/8" e G1/4"
Fixing type	panel mounted or with bracket
Mounting position	any
Tamper-proof knob	
Version with lock	upon request

GUIDE TO REFERENCES

MR 1/4" 039 08 R



AIR PREPARATION

VALVES

CYLINDERS

FITTINGS

WATER PREPARATION

LINE 039 1/8"-1/4" | PRESSURE REGULATORS

PRESSURE REGULATORS LINE 039

The expertise we have gained over many years in planning and production of pressure regulators has led us to constantly improve our products. Our customers urge us to develop even more specific and customised solutions. Nowadays we can offer a broad range of regulators for many applications.

COMPRESSED AIR REGULATION

LINE 039 REGULATOR FOR COMPRESSED AIR



Features: big flow rate, stability

LINE 039 SRU QUICK EXHAUST REGULATOR



Feature: high exhaust speed

LINE 039 FA-RM AIR ESCAPE REGULATOR WITH INCREASED RELIEVING



Feature: high sensitivity and precision

LINE 039 EPDM AIR REGULATOR WITH EPDM SEALS



Feature: resistance against chemical aggressions

WATER AND FLUIDS REGULATION

LINE 039 NON-RELIEVING REGULATOR FOR WATER



Features: big flow rate, stability

LINE 039 POM WITH CERTIFIED MATERIALS FOR DRINKING WATER



Features: compatibility and precision

LINE 039 INOX WITH CERTIFIED MATERIALS AND STAINLESS STEEL FOR DRINKING WATER



Features: compatibility and precision

LINE 039 EPDM NON-RELIEVING REGULATOR FOR LIQUIDS



Features: compatibility with brake fluid

Would you like to learn more about our range for water and fluids? Please visit the Water Preparation section.



LK VERSION WITH LOCK

The regulator is adjusted at the required pressure, the knob is blocked and locked. Pressure modification is possible only by opening the lock.



PRE-SET VERSION

The regulator is preset at the pressure value required by the customer. A tamper-proof knob is mounted in order to avoid any modification to the preset pressure.

AIR PREPARATION

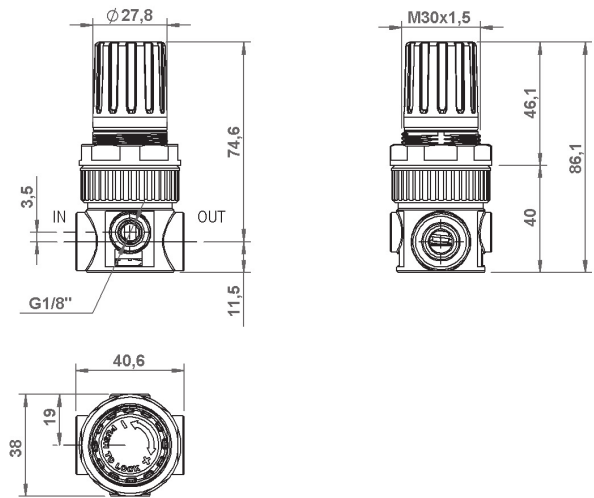
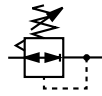
VALVES

CYLINDERS

FITTINGS

WATER PREPARATION

LINE 039 1/8"-1/4" | PRESSURE REGULATORS



GENERAL FEATURES

High performance microregulator with balanced valve for guaranteeing great stability even upon variation of the upstream pressure and low load loss.

Relieving for a quick exhaust of the upstream overpressure.

Knob with pressure locking device.

Equipped with nut and nr. 1 plug.

GENERAL TECHNICAL DATA

Pressure range	0-2; 0-4; 0-8; 0-12 Bar
Maximum inlet pressure	16 Bar
Reference flow rate (P1= 6,3 bar ΔP= 1 bar)	900 NI/min
Working temperature (a 10 bar)	-5 / +50°C*
Max. torque inserts G1/8" IN-OUT	20 Nm
Max Torque G1/4" IN-OUT	25 Nm
Max torque gauge port	1 Nm
Weight	0,100 kg

Below 3°C the air of the circuit must be free from humidity

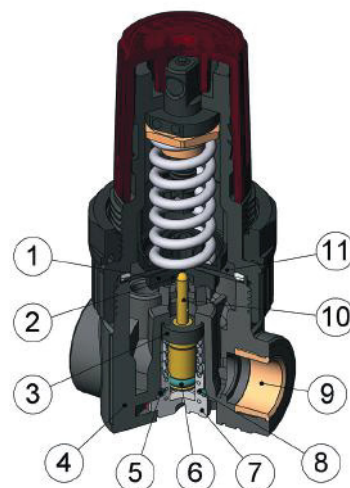
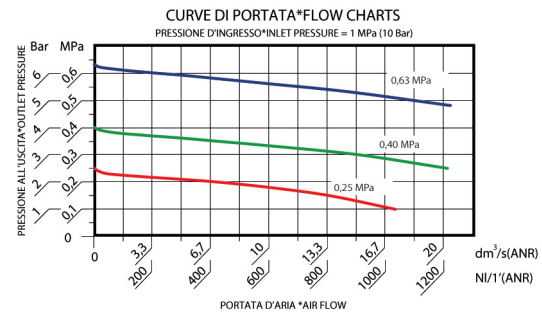
ORDERING CODE

CODE	REF.
039.00.00001	MR 1/8" 039 02 R
039.00.00002	MR 1/8" 039 04 R
039.00.00003	MR 1/8" 039 08 R
039.00.00004	MR 1/8" 039 12 R
039.00.00401	MR 1/4" 039 02 R
039.00.00402	MR 1/4" 039 04 R
039.00.00403	MR 1/4" 039 08 R
039.00.00404	MR 1/4" 039 12 R

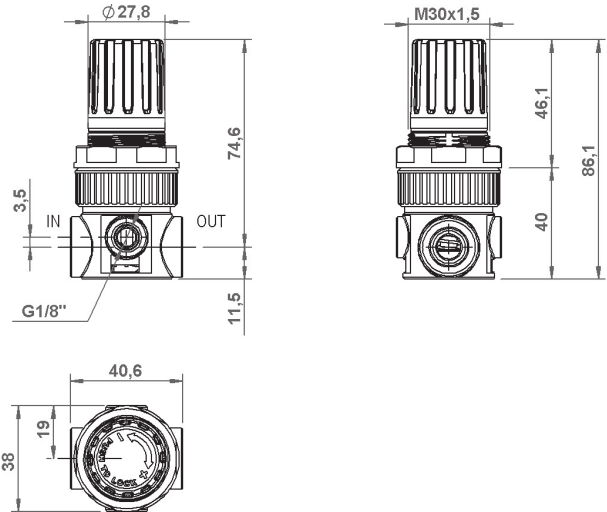
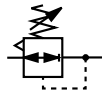
USED MATERIALS

- | | |
|-------------------------|---------------------------------|
| 1. Diaphragm pin - POM | 7. Plug - POM |
| 2. Relieving seal - NBR | 8. Valve spring - INOX AISI 316 |
| 3. Valve sealing - NBR | 9. Inserts - BRASS OT58 |
| 4. Regulator body - POM | 10. Valve body - BRASS OT58 |
| 5. O-Ring plug - NBR | 11. Diaphragm - NBR |
| 6. O-Ring valve - NBR | |

For the non-relieving models please go to Water preparation section.



LINE 039 1/8"-1/4" | REGULATORS FA-RM AIR ESCAPE



GENERAL FEATURES

High precision microregulators, thanks to an innovative CONTROLLED AIR ESCAPE SYSTEM which enhances the regulation sensitivity.

The relieving exhaust hole has been enlarged to 1,8mm for guaranteeing greater flow rate during the phase of overpressure exhaust.

Knob with pressure locking device.

Equipped with nut and nr. 1 plug.

GENERAL TECHNICAL DATA

Pressure range	0-2; 0-4; 0-8; 0-12 Bar
Maximum inlet pressure	16 Bar
Reference flow rate (P1= 6,3 bar ΔP= 1 bar)	900 NI/min
Flow rate controlled air escape (Inlet pr.: 10 bar Outlet pr.: 6 bar)	3,7 NI/min
Working temperature (a 10 bar)	-5 / +50°C*
Max. torque inserts G1/8" IN-OUT	20 Nm
Max Torque G1/4" IN-OUT	25 Nm
Max torque gauge port	1 Nm
Weight	0,100 kg

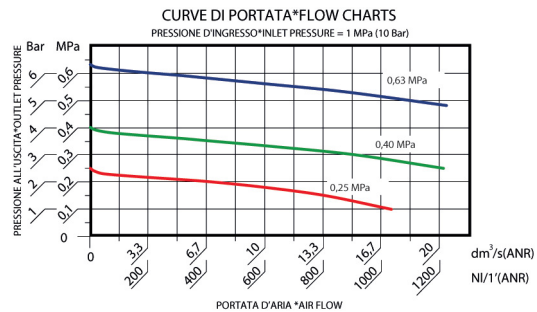
Below 3°C the air of the circuit must be free from humidity

ORDERING CODE

CODE	REF.
039.00.00701	MR 1/8" 039 02 R FA-RM
039.00.00702	MR 1/8" 039 04 R FA-RM
039.00.00703	MR 1/8" 039 08 R FA-RM
039.00.00704	MR 1/8" 039 12 R FA-RM
039.00.00801	MR 1/4" 039 02 R FA-RM
039.00.00802	MR 1/4" 039 04 R FA-RM
039.00.00803	MR 1/4" 039 08 R FA-RM
039.00.00804	MR 1/4" 039 12 R FA-RM

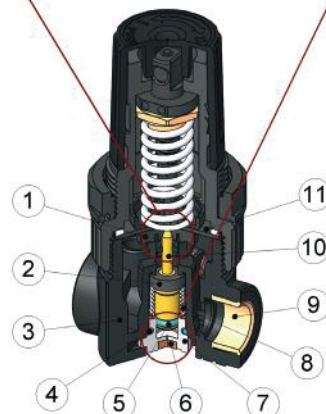
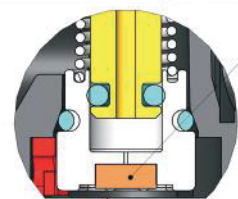
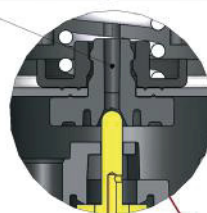
USED MATERIALS

- | | |
|-------------------------------|---------------------------------|
| 1. Diaphragm pin - POM | 7. Plug - POM |
| 2. Sealing valve - NBR | 8. Valve spring - INOX AISI 316 |
| 3. Regulator body - POM | 9. Inserts - BRASS OT58 |
| 4. O-Ring plug - NBR | 10. Valve body - BRASS OT58 |
| 5. O-Ring valve - NBR | 11. Diaphragm - NBR |
| 6. Silencer - sintered bronze | |

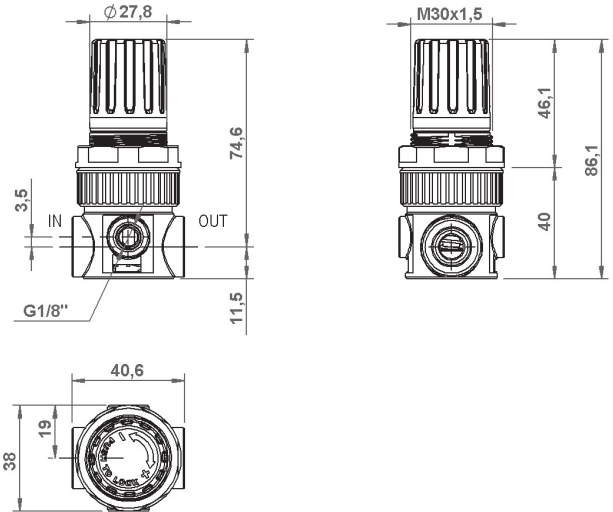
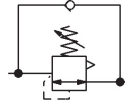


Foro di scarico del relieving maggiorato
Increased relieving exhaust hole

Fuga d'aria controllata e silenziosa
Controlled and Air escape with silencer



LINE 039 1/8"-1/4" REGULATORS SRU QUICK EXHAUST



GENERAL FEATURES

Model equipped with internal unidirectional valve enabling the quick exhaust of pressure when the circuit is depressurized. The most common application of SRU model provides the mounting of the microregulator between the control valve and the cylinder. The exhaust phase of the valve does not incur in any load loss thanks to the passage through the unidirectional valve, thus guaranteeing speed and high performance.

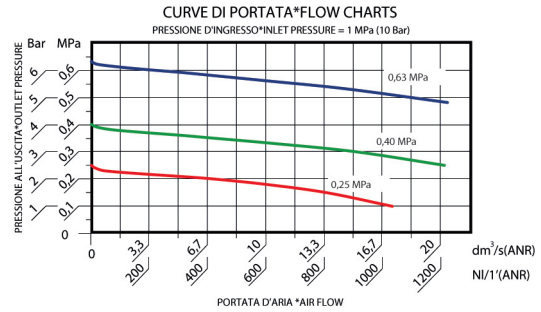
GENERAL TECHNICAL DATA

Pressure range	0-2; 0-4; 0-8; 0-12 Bar
Maximum inlet pressure	16 Bar
Reference flow rate (P1= 6,3 bar ΔP= 1 bar)	900 NI/min
Working temperature (a 10 bar)	-5 / +50°C*
Max. torque inserts G1/8" IN-OUT	20 Nm
Max Torque G1/4" IN-OUT	25 Nm
Max torque gauge port	1 Nm
Weight	0,100 kg

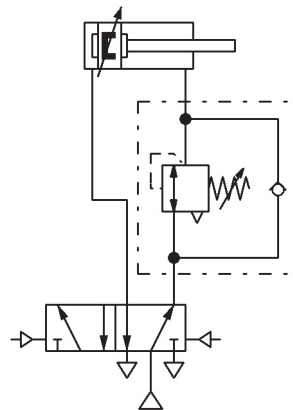
Below 3°C the air of the circuit must be free from humidity

ORDERING CODE

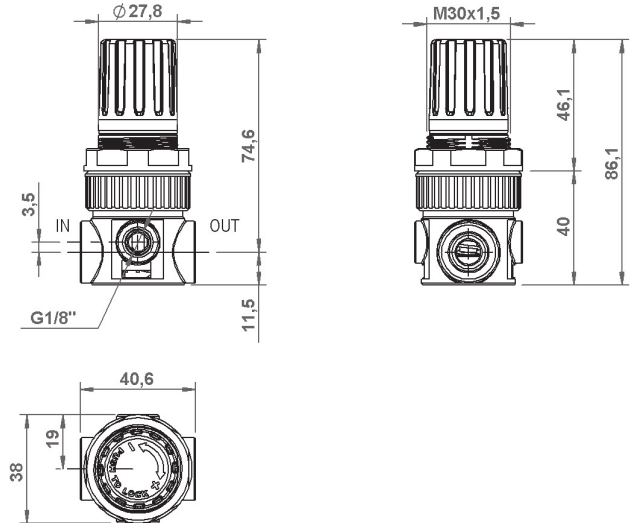
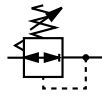
CODE	REF.
039.00.00022	MR 1/8" 039 02 R SRU
039.00.00023	MR 1/8" 039 04 R SRU
039.00.00024	MR 1/8" 039 08 R SRU
039.00.00025	MR 1/8" 039 12 R SRU
039.00.00441	MR 1/4" 039 02 R SRU
039.00.00442	MR 1/4" 039 04 R SRU
039.00.00443	MR 1/4" 039 08 R SRU
039.00.00444	MR 1/4" 039 12 R SRU



APPLICATION SCHEME



LINE 039 1/8"-1/4" | EPDM REGULATORS



GENERAL FEATURES

In this version, all the elastomers in contact with fluid (seals, diaphragm, etc.) are in EPDM so as to ensure the greatest resistance against chemical aggression.
 Applications: solvent-laden working environment (painting); contact with brake fluid (non-relieving version).
 High performance microregulator with balanced valve for guaranteeing great stability even upon variation of the upstream pressure and low load loss.
 Available in relieving and non-relieving version.
 Knob with pressure locking device.
 Equipped with nut and nr. 1 plug.

GENERAL TECHNICAL DATA

Pressure range	0-2; 0-4; 0-8; 0-12 Bar
Maximum inlet pressure	16 Bar
Reference flow rate (P1= 6,3 bar ΔP= 1 bar)	900 NI/min
Working temperature (a 10 bar)	-5 / +50°C*
Max. torque inserts G1/8" IN-OUT	20 Nm
Max Torque G1/4" IN-OUT	25 Nm
Max torque gauge port	1 Nm
Weight	0,100 kg

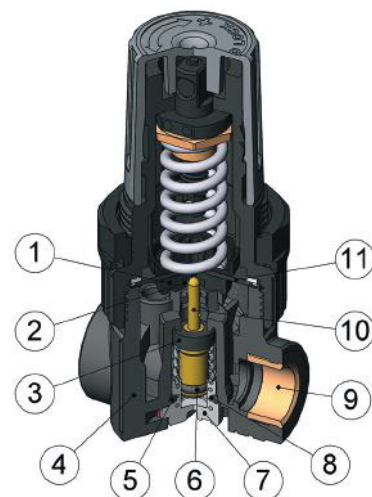
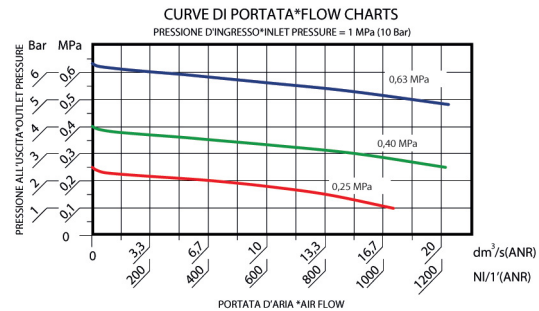
Below 3°C the air of the circuit must be free from humidity

ORDERING CODE

CODE	REF.
Regolatore con relieving	
038.00.00300	MR 1/4" 039 02 R EPDM
038.00.00301	MR 1/4" 039 04 R EPDM
038.00.00302	MR 1/4" 039 08 R EPDM
038.00.00303	MR 1/4" 039 12 R EPDM
Non relieving regulator	
039.00.00304	MR 1/4" 039 02A EPDM
039.00.00305	MR 1/4" 039 04A EPDM
039.00.00306	MR 1/4" 039 08A EPDM
039.00.00307	MR 1/4" 039 12A EPDM

USED MATERIALS

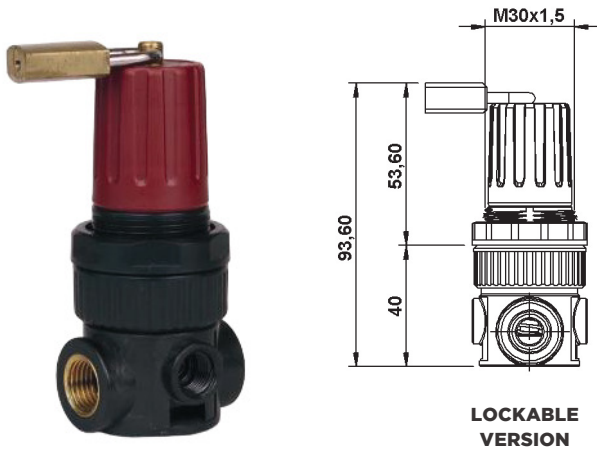
- | | |
|--------------------------|---------------------------------|
| 1. Diaphragm pin - POM | 7. Plug - POM |
| 2. Relieving seal - EPDM | 8. Valve spring - INOX AISI 316 |
| 3. Valve sealing - EPDM | 9. Inserts - BRASS OT58 |
| 4. Regulator body - POM | 10. Valve body - BRASS OT58 |
| 5. O-Ring plug - EPDM | 11. Diaphragm - EPDM |
| 6. O-Ring valve - EPDM | |



LINE 039 1/8"-1/4" | SPECIAL VERSIONS

AIR PREPARATION

VALVES



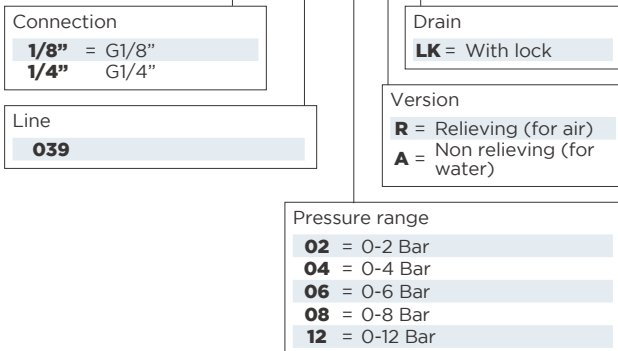
LOCKABLE VERSION

MICROREGULATOR WITH LOCK

- * All Aircomp Microregulators are available in the version with lock.
- This regulator version allows adjusting the required pressure and fix it, preventing accidental setting changes.
- * The regulator is equipped with padlock and two keys.
- * For further technical features, please refer to the respective Line, or contact our office.

GUIDE TO REFERENCES

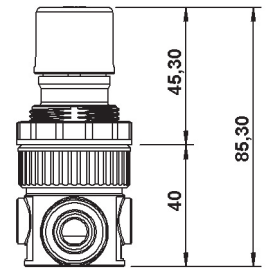
MR 1/4" 039 08 R LK



CYLINDERS

FITTINGS

WATER PREPARATION



TAMPER-PROOF VERSION

PRE-SET MICROREGULATOR

- * Microregulators with outlet pressure pre-set by our production can be supplied upon request.
- * With this version the Customer receives a pre-set Regulator featuring the required outlet pressure, equipped with tamper-proof knob.
- * The tamper-proof knob enables keeping the pre-set outlet pressure, preventing unintentional pressure adjustments.
- * In order to change the pre-set pressure, it is necessary to break the knob.
- * Line recommended for pre-set version: Line 039, that keeps high precision on outlet pressure thanks to its own features.
- * For further information about tolerance on outlet pressure, please contact our offices.

GUIDE TO REFERENCES

MR 1/4" 039 T 4 R

