

# LINE 099-1/8" e 1/4"

## | PRECISION REGULATORS



### GENERAL FEATURES

Precision Regulator Line 099 is distinguished by high precision and stability of regulated pressure thanks to its multi-diaphragm construction concept.

The air escape feature along with a particularly sensitive relieving exhaust allow optimal performance even with low pressures.

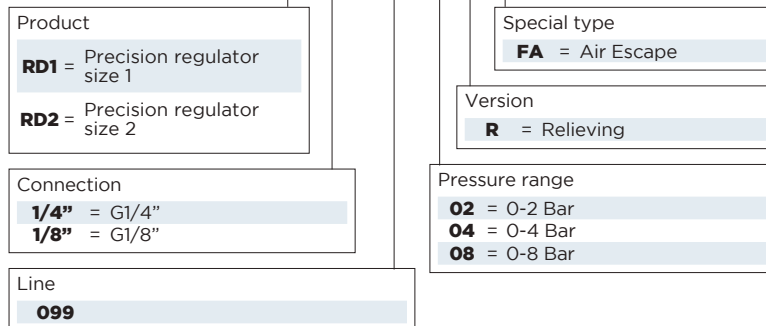
It has been designed for accurate balance pressure setting or for working as tension controller, besides all the other applications where high precision is required.

### GENERAL TECHNICAL DATA

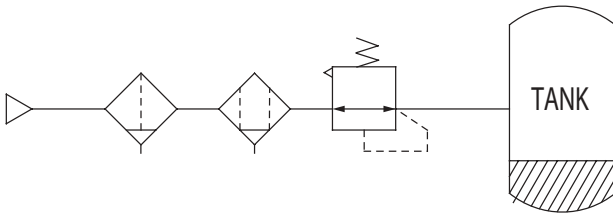
<b>Fluid</b>	compressed air
<b>Connessioni IN - OUT</b>	1/8"G e 1/4"G
<b>Mounting position</b>	any
<b>Fixing</b>	through wall bracket

### GUIDE TO REFERENCES

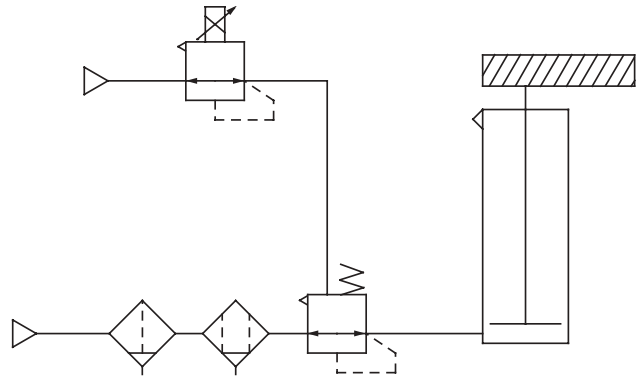
**RD1 1/8" 099 02 R FA**



Constant fluid pressure

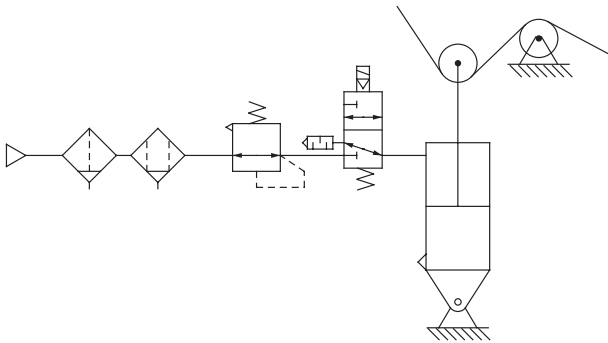


Balance pressure setting

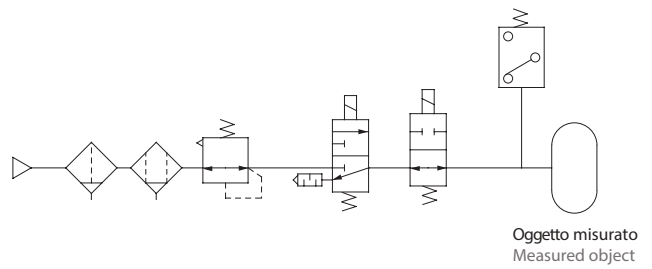


Limits pressure fluctuation when actuating cylinder

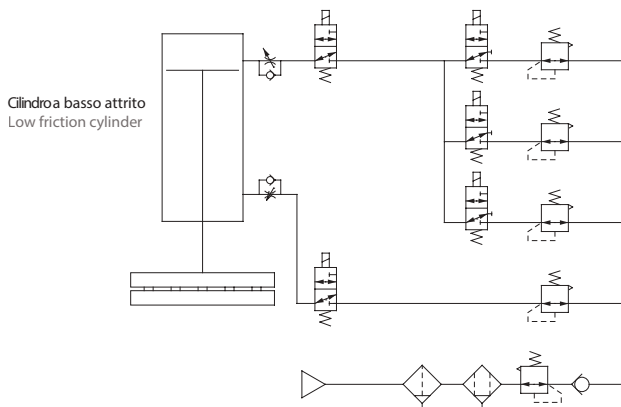
Pressure setting for tension controller



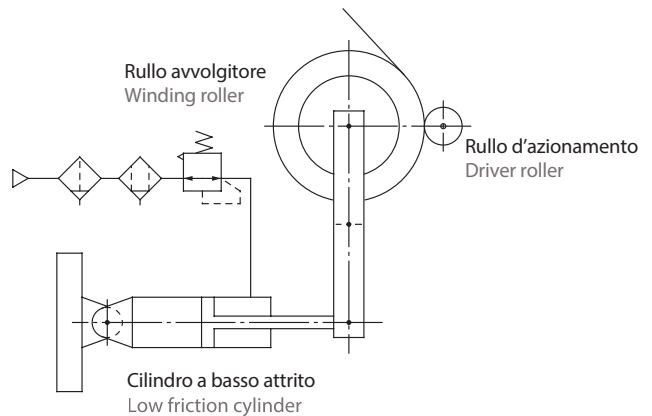
Leak test circuit



Multistage pressure control (wrapping machine)



Contact pressure control



Maintains constant pressure during the cylinder working

AIR PREPARATION

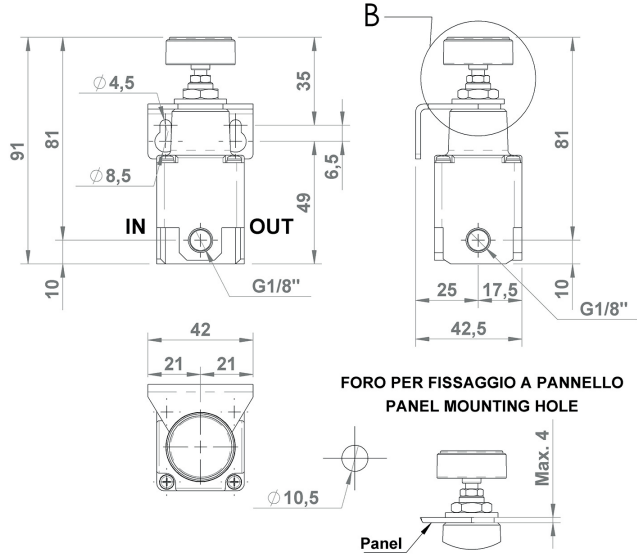
VALVES

CYLINDERS

FITTINGS

WATER PREPARATION

# LINE 099-1/8" | PRECISION REGULATORS



FORO PER FISSAGGIO A PANNELLO  
PANEL MOUNTING HOLE

## GENERAL FEATURES

Precision regulator with controlled air escape. Double-diaphragm operation ensuring a particularly high level of precision and repeatability, even at low pressures. Equipped with nr. 1 plug and nr. 1 bracket.

## GENERAL TECHNICAL DATA

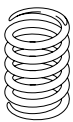
<b>Fluid</b>	compressed air
<b>INLET-OUTLET connections</b>	1/8"
<b>Pressure range</b>	0-2 Bar, 0-4 Bar; 0-8 Bar
<b>Sensitivity</b>	0,2% F.S.
<b>Repeatability</b>	0,5% F.S.
<b>Working pressure</b>	0 - 10 Bar
<b>Reference flow rate</b>	see the flow chart
<b>Working temperature (a 10 bar)</b>	-5 / +60°C*
<b>Weight</b>	0,150 kg

Below 3°C the air of the circuit must be free from humidity

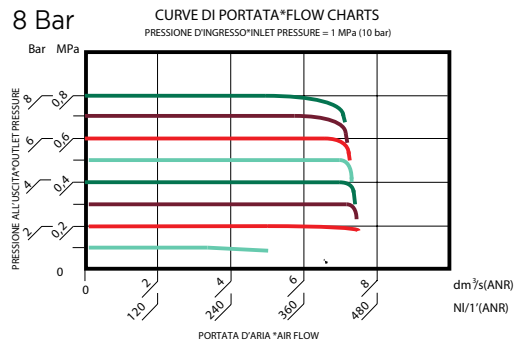
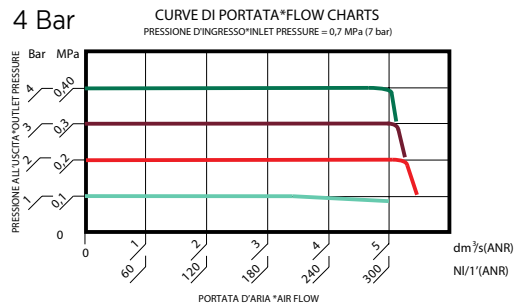
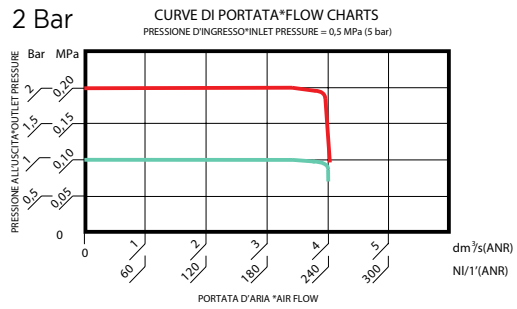
## ORDERING CODE

CODE	REF.
<b>099.01.01.001</b>	RD1 1/8 099 02 R FA
<b>099.01.01.002</b>	RD1 1/8 099 04 R FA
<b>099.01.01.003</b>	RD1 1/8 099 08 R FA

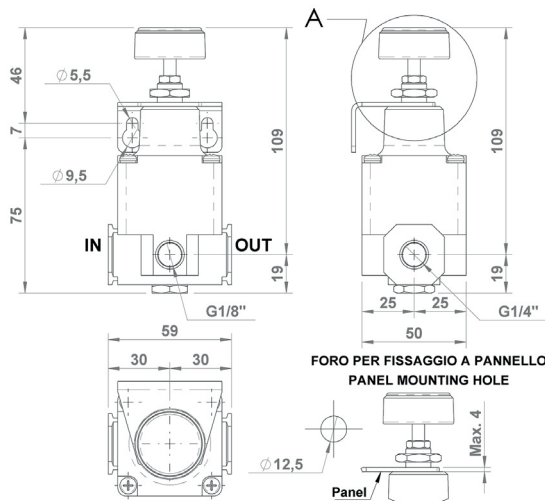
## SPARE PARTS REGULATION SPRING



CODE	PROD.	PRESSURE RANGE
A99.01.01.001	RD1	0+2 Bar
A99.01.01.002	RD1	0+4 Bar
A99.01.01.003	RD1	0+8 Bar



# LINE 099-1/4" | PRECISION REGULATORS



## GENERAL FEATURES

Precision regulator with controlled air escape. Double-diaphragm operation ensuring a particularly high level of precision and repeatability, even at low pressures. Equipped with nr. 1 plug and nr. 1 bracket.

## GENERAL TECHNICAL DATA

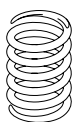
<b>Fluid</b>	compressed air
<b>INLET-OUTLET connections</b>	1/4"
<b>Pressure range</b>	0-2 Bar, 0-4 Bar; 0-8 Bar
<b>Sensitivity</b>	0,2% F.S.
<b>Repeatability</b>	0,5% F.S.
<b>Working pressure</b>	0 - 10 Bar
<b>Reference flow rate</b>	see the flow chart
<b>Working temperature (a 10 bar)</b>	-5 / +60°C*
<b>Weight</b>	0,300 kg

Below 3°C the air of the circuit must be free from humidity

## ORDERING CODE

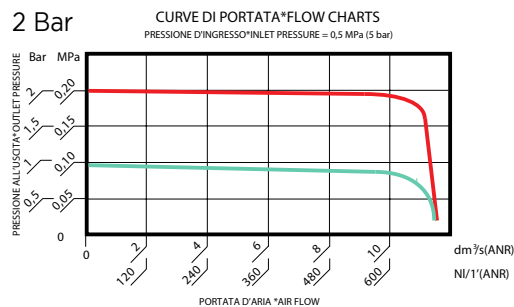
CODE	REF.
<b>099.02.01.001</b>	RD2 1/4 099 02 R FA
<b>099.02.01.002</b>	RD2 1/4 099 04 R FA
<b>099.02.01.003</b>	RD2 1/4 099 08 R FA

## SPARE PARTS REGULATION SPRING

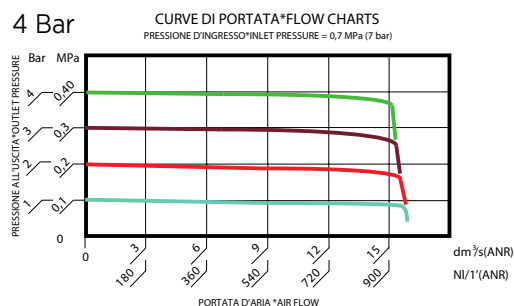


CODE	PROD.	PRESSURE RANGE
A99.02.01.001	RD2	0+2 Bar
A99.02.01.002	RD2	0+4 Bar
A99.02.01.003	RD2	0+8 Bar

## 2 Bar



## 4 Bar



## 8 Bar

