

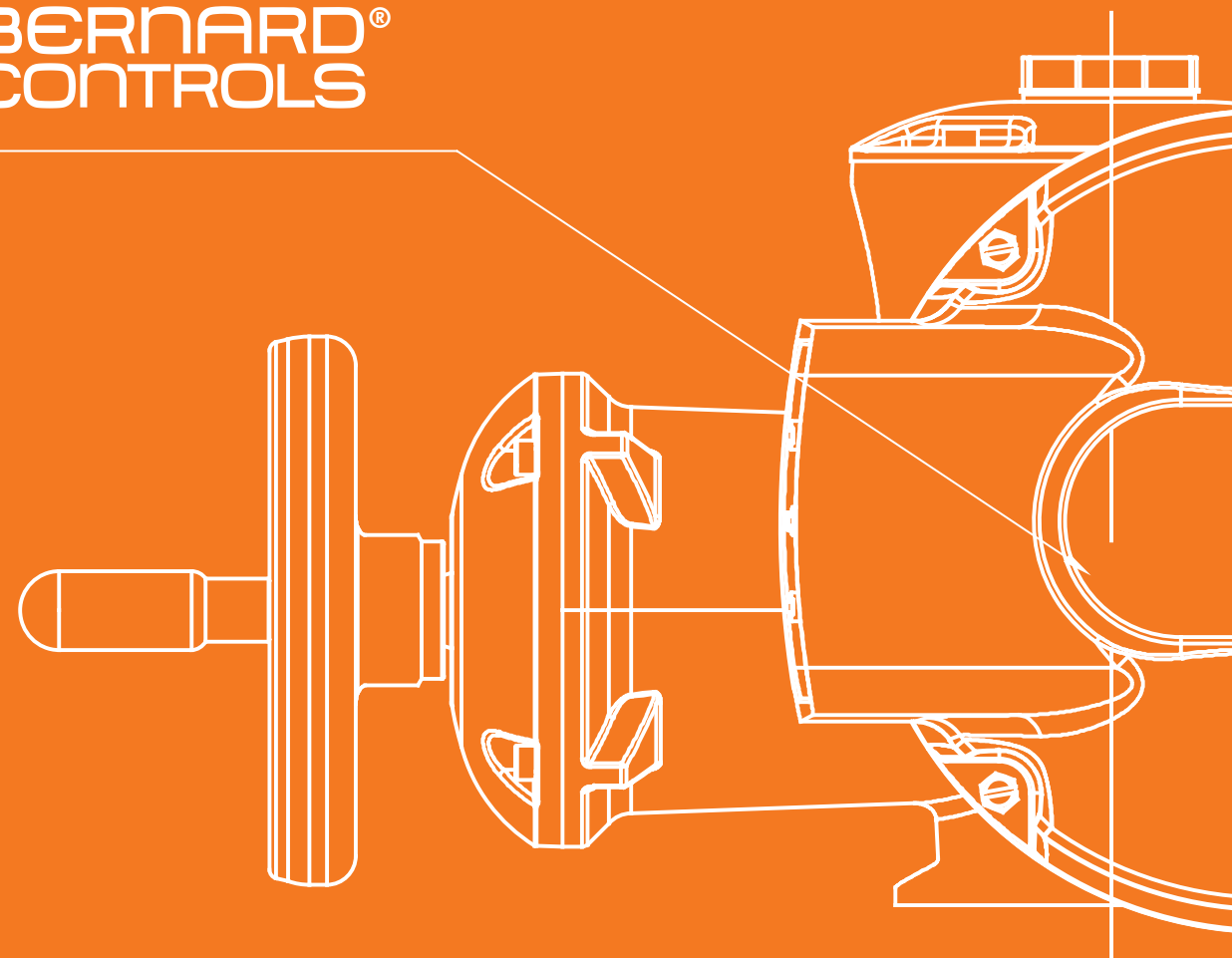


The essentials

Be it for common flow control in a thermal power plant, in a water treatment plant, for ventilation systems or for any other kind of industrial applications, you need a compact, simple and reliable electric actuation solution.

In case of **moderate environmental and operational constraints**, BERNARD CONTROLS has created the FIRST BC label to identify products and solutions which offer to users **the Essentials**: the key functions to operate your valve safely and efficiently in case of **standard applications**.

In 2017, the FIRST BC label turns over a new leaf with the launch of product ranges with a brand new design - compact and optimized for their use. The multi-turn applications can now be addressed with the AT range. These electric actuators are even more closer to standard actuation needs of the power, water or various industry applications than the previous FIRST BC generation. This new AT range guarantees the essential functions required to operate a valve or a damper in moderate environmental and operational constraints.



BERNARD CONTROLS GROUP

CORPORATE HEADQUARTERS

4 rue d'Arsonval - CS 70091 / 95505 Gonesse CEDEX France / Tel. : +33 (0)1 34 07 71 00 / Fax : +33 (0)1 34 07 71 01 / mail@bernardcontrols.com

CONTACT BY OPERATING AREAS

>AMERICAS

NORTH AMERICA
BERNARD CONTROLS UNITED STATES
HOUSTON
inquiry.usa@bernardcontrols.com
Tel. +1 281 578 66 66

SOUTH AMERICA
BERNARD CONTROLS LATIN AMERICA
inquiry.southamerica@bernardcontrols.com
Tel. +1 281 578 66 66

>ASIA

CHINA
BERNARD CONTROLS CHINA &
BERNARD CONTROLS CHINA NUCLEAR
BEIJING
inquiry.china@bernardcontrols.com
Tel. +86 (0) 10 6789 2861

KOREA
BERNARD CONTROLS KOREA
SEOUL
inquiry.korea@bernardcontrols.com
Tel. +82 (0)2 553 6957

SINGAPORE
BERNARD CONTROLS SINGAPORE
SINGAPORE
inquiry.singapore@bernardcontrols.com
Tel. +65 65 654 227

>EUROPE

BELGIUM
BERNARD CONTROLS BENELUX
NIVELLES (BRUSSELS)
inquiry.belgium@bernardcontrols.com
inquiry.holland@bernardcontrols.com
Tel. +32 (0)2 343 41 22

FRANCE
BERNARD CONTROLS FRANCE &
BERNARD CONTROLS NUCLEAR FRANCE
GONESSE (PARIS)
inquiry.france@bernardcontrols.com
Tel. +33 (0)1 34 07 71 00

GERMANY
BERNARD CONTROLS DEUFRA
TROISDORF (KÖLN)
inquiry.germany@bernardcontrols.com
Tel. +49 2241 9834 0

ITALY
BERNARD CONTROLS ITALIA
RHO (MILANO)
inquiry.italy@bernardcontrols.com
Tel. +39 02 931 85 233

RUSSIA
BERNARD CONTROLS RUSSIA
inquiry.russia@bernardcontrols.com
Tel. +33 (0)1 34 07 71 00

SPAIN
BERNARD CONTROLS SPAIN
MADRID
inquiry.spain@bernardcontrols.com
Tel. +34 91 30 41 139

UNITED KINGDOM
BERNARD CONTROLS UNITED KINGDOM
inquiry.uk@bernardcontrols.com
Tel. +44 (0)7435 266310

>INDIA, MIDDLE EAST & AFRICA

AFRICA
BERNARD CONTROLS AFRICA
ABIDJAN - IVORY COAST
inquiry.africa@bernardcontrols.com
Tel. + 225 21 34 07 82

INDIA
BERNARD CONTROLS INDIA
inquiry.india@bernardcontrols.com
Tel. +971 4 880 0660

MIDDLE-EAST
BERNARD CONTROLS MIDDLE-EAST
DUBAI - U.A.E.
inquiry.middleeast@bernardcontrols.com
Tel. +971 4 880 0660

More than 50 agents and distributors worldwide. Contact details on www.bernardcontrols.com

New

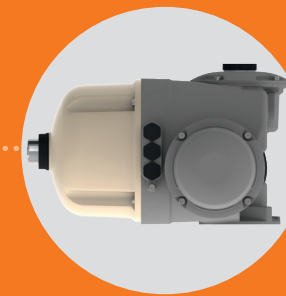
Weatherproof
Multi-turn Actuators
AT RANGE



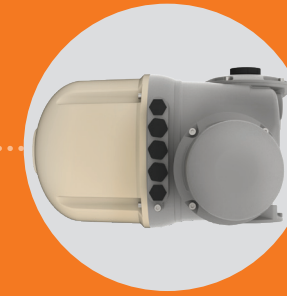
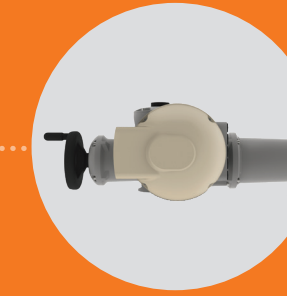
> AT range

The essentials

for multi-turn electric actuation



AT3 - AT6L - AT6 - AT14 - AT25 - AT50
SWITCH version

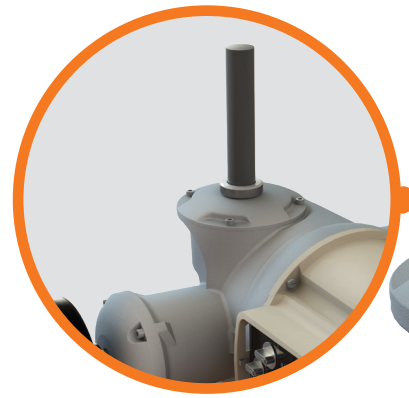


AT3 - AT6L - AT6 - AT14 - AT25 - AT50
LOGIC version

Product overview

Wide Stem Acceptance

- > suitable for rising stem thanks to a removable screw cap
- > easy & watertight fixation of the stem cover



Declutch-free handwheel

- > with motor priority
- > with foldable handle



User-friendly local commands

through 2 buttons + 1 padlockable selector

New mobile application BC App

"Set up your actuator and more in a few clicks!"

- > Set up & Operate your actuator using your mobile phone
- > Get access to clear descriptions of alarms, troubleshooting functions, documentation, Bernard Controls Assistance
- > Upload & change the full actuator configuration in one step
- > Even complex settings are made easier



Two possible positions for the cover



Heavy duty design

Full aluminium enclosure protected by durable powder coating Grey & Champagne!

Mechanical position indicator

- > On SWITCH VERSION: Easy & quick customization of color indication & orientation from the outside



Product specifications

- 30 to 500 Nm (direct) & up to 8,000 Nm on request
- 10 to 127 rpm (direct)
- Type of Controls:
 - > Electromechanical SWITCH
 - > Integrated LOGIC (V2)
- Wiring:
 - > Screw Type Terminal
- BC Duty & Modulating Classification
 - > On-Off: Class A
 - > Inching/Positioning: Class B
 - > Modulating: Class III
- IP68
- Corrosive environment: C4
- Operating temp.: -20...+60°C (-40°C as an option)

Large LCD display

Easily orientable in few clicks on the BC APP or through local commands



Product benefits

• Innovative, reliable & unique design

- > Product architecture & torque range adapted to customers' requirements: 6 models from 30 to 500 Nm
- > Selection of the essential features to ensure a competitive but performing solution: actuator duty from On-Off to Modulating, heavy duty enclosure protection, IP68, integrated control, wide range of output speeds...
- > New reliable camblock system unaffected by vibrations. Fully new & unique design with internal modularity for compact solution, e.g. modular position sensor enables up to 1700 turns with the same product

• Performance for multi-turn actuation

- > From 30Nm (adjustable to 12Nm) to 500Nm (direct) and more with gearboxes
- > Wide range of speeds to address all types of applications
- > Wide stem acceptance
- > Self-locking at all speeds without any additional component*
- > S4 Motor Service Duty on all models
- > Suitable for modulating applications (BC Class III complying with EN15714-2 Class C)

• Easy to install

- > Easy commissioning: set up of travel limitation system (new camblock) with a standard screwdriver (similar to FIRST BC AQ range), only two standard tools required to install and set up the actuator on valve, wiring reduced to the minimum for fast assembly
- > Large LCD display on LOGIC version for user-friendly commissioning and local command. Easily orientable (4-way direction) in few clicks
- > Product suitable for rising stem thanks to adjustable torque sensor from 40 to 100%

• Easy to maintain

- > Declutch-free manual override for quick intervention on site
- > Mechanical position indicator on SWITCH versions: check the position of your valve at a glance
- > BC APP: Bernard Controls new mobile application for setting, operating, troubleshooting and easy access to documentation

• The main functions of integrated control with the new LOGIC control (v2)

- > Turn-key, time & cost-saving solution
- > User-friendly & intuitive
- > Non-intrusive setting for enhanced safety and reliability
- > Compatible with common fieldbus protocols: Modbus RTU, Profibus DPV1.
- > Bluetooth communication (as standard) to communicate with Bernard Controls' BC App



*except AT25 and AT50 at 127rpm



Full range description, product specifications and technical data on BERNARD CONTROLS' website.