

# LF 3800 Push-In Fittings / Stud Fittings



Made of 316L stainless steel, this range is suitable for conveying corrosive or food fluids, in aggressive environments or for high hygiene requirements.

Ø metric: 4 to 12 mm  
Ø inch: 3/16" to 1/2"

## Technical Characteristics

- **Compatible Fluids:** All fluids compatible with the fitting component materials
- **Working Pressure:** Vacuum to 30 bar (20 bar: 3879 and 3889)
- **Working Temperature:** -25°C to +150°C

Adaptor Tightening Torque	Threads	M5 x0.8	G1/8	G1/4	G3/8	G1/2
	daN.m	0.16	0.8	1.2	3	3.5

Bulkhead Tightening Torque	Ø (mm)	4	6	8	10	12
	daN.m min. max.		0.5 0.9	0.5 0.9	0.6 1	0.6 1

Reliable performance is dependent upon the type of fluid conveyed, component materials and tubing being used.

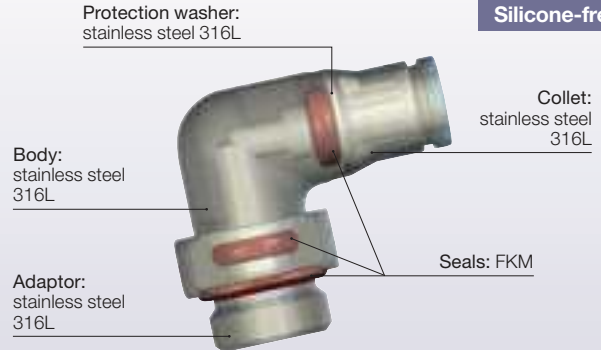
Use is guaranteed with a vacuum of 755 mm Hg (99% vacuum).

Technical performance tested at -25°C according to the ISO 14743 standard.

## Regulations

- ISO 14743
- RoHS
- REACH
- FDA : 21 CFR
- PED

## Component Materials

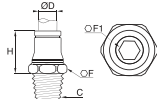


## Advantages

- Resistance to corrosion thanks to the component material
- Suitable for permanent food contact
- Suitable for industrial cleaning agents and detergents
- Hygienic external design, for reducing retention zones

## 3805 Stud Fitting, Male BSPT Thread

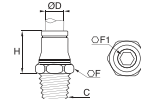
Stainless steel 316L, FKM



ØD	C		F	F1	H	Kg
4	R1/8	<b>3805 04 10</b>	10	3	14.5	0.008
	R1/4	<b>3805 04 13</b>	14	3	14.5	0.015
6	R1/8	<b>3805 06 10</b>	13	4	18	0.012
	R1/4	<b>3805 06 13</b>	14	4	16.5	0.018
8	R1/8	<b>3805 08 10</b>	15	5	19	0.014
	R1/4	<b>3805 08 13</b>	15	6	18	0.018
10	R3/8	<b>3805 08 17</b>	17	6	18.5	0.025
	R1/4	<b>3805 10 13</b>	19	6	24	0.029
12	R3/8	<b>3805 10 17</b>	19	6	22.5	0.030
	R1/4	<b>3805 12 13</b>	22	7	25	0.034
12	R3/8	<b>3805 12 17</b>	22	8	24	0.040
	R1/2	<b>3805 12 21</b>	22	10	23	0.046

## 3805 Stud Fitting, Male NPT Thread

Stainless steel 316L, FKM



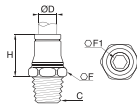
ØD	C		F	F1	H	Kg
4	NPT1/8	<b>3805 04 11</b>	11	3	14.5	0.009
	NPT1/8	<b>3805 06 11</b>	13	4	18	0.012
6	NPT1/4	<b>3805 06 14</b>	14	4	16.5	0.017
	NPT1/8	<b>3805 08 11</b>	15	5	19	0.015
8	NPT1/4	<b>3805 08 14</b>	15	6	18	0.018
	NPT1/8	<b>3805 10 14</b>	19	6	24	0.028
10	NPT3/8	<b>3805 10 18</b>	19	7	22.5	0.031
	NPT1/4	<b>3805 12 14</b>	22	7	25	0.034
12	NPT3/8	<b>3805 12 18</b>	22	8	24	0.039
	NPT1/2	<b>3805 12 22</b>	22	10	23	0.045

# LF 3800 Push-In Fittings / Stud Fittings

## 3805 Stud Fitting, Male NPT Thread

Inch

Stainless steel 316L, FKM

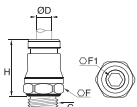


ØD	C		F	F1	H	Kg
3/16	NPT1/8	<b>3805 55 11</b>	10	3	15.5	0.010
	NPT1/8	<b>3805 56 11</b>	13	4	19	0.012
1/4	NPT1/4	<b>3805 56 14</b>	14	4	17.5	0.017
	NPT1/4	<b>3805 60 14</b>	19	6	25	0.029
3/8	NPT3/8	<b>3805 60 18</b>	19	7	24	0.031
	NPT1/4	<b>3805 62 14</b>	22	7	26	0.036
1/2	NPT3/8	<b>3805 62 18</b>	22	8	25	0.041
	NPT1/2	<b>3805 62 22</b>	22	10	25	0.049

5/32" (4 mm) and 5/16" (8 mm) also available

## 3801 Stud Fitting, Male BSPP and Metric Thread

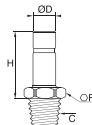
Stainless steel 316L, FKM



ØD	C		F	F1	H	Kg
4	M5x0.8	<b>3801 04 19</b>	10	2.5	17	0.005
	G1/8	<b>3801 04 10</b>	13	3	16.5	0.009
6	M5x0.8	<b>3801 06 19</b>	13	2.5	20.5	0.010
	G1/8	<b>3801 06 10</b>	13	4	18	0.010
8	G1/4	<b>3801 06 13</b>	17	4	18	0.015
	G1/8	<b>3801 08 10</b>	15	5	19	0.013
10	G1/4	<b>3801 08 13</b>	17	5	20.5	0.017
	G3/8	<b>3801 08 17</b>	21	6	20	0.027
12	G1/4	<b>3801 10 13</b>	19	7	25	0.025
	G3/8	<b>3801 10 17</b>	21	7	25	0.034
12	G1/4	<b>3801 12 13</b>	21	7	27	0.030
	G3/8	<b>3801 12 17</b>	21	9	26.5	0.034

## 3821 Stud Standpipe, Male BSPT Thread

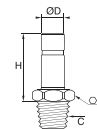
Stainless steel 316L



ØD	C		F	H	Kg
4	R1/8	<b>3821 04 10</b>	10	21	0.006
	R1/8	<b>3821 06 10</b>	10	23	0.007
6	R1/4	<b>3821 06 13</b>	14	24	0.015
	R1/8	<b>3821 08 10</b>	11	24	0.008
8	R1/4	<b>3821 08 13</b>	14	25	0.016
	R1/4	<b>3821 10 13</b>	19	30	0.017
10	R3/8	<b>3821 10 17</b>	19	30	0.022
	R1/4	<b>3821 12 13</b>	19	31	0.017
12	R3/8	<b>3821 12 17</b>	19	31	0.022
	R1/2	<b>3821 12 21</b>	22	32	0.037

## 3821 Stud Standpipe, Male NPT Thread

Stainless steel 316L

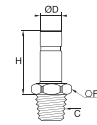


ØD	C		F	H	Kg
4	NPT1/8	<b>3821 04 11</b>	10	21	0.006
	NPT1/8	<b>3821 06 11</b>	10	23	0.007
6	NPT1/4	<b>3821 06 14</b>	14	24	0.016
	NPT1/8	<b>3821 08 11</b>	14	24	0.008
8	NPT1/4	<b>3821 08 14</b>	14	25	0.016
	NPT1/4	<b>3821 10 14</b>	14	30	0.018
10	NPT3/8	<b>3821 10 18</b>	17	30	0.010
	NPT1/4	<b>3821 12 14</b>	14	31	0.018

## 3821 Stud Standpipe, Male NPT Thread

Inch

Stainless steel 316L

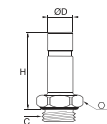


ØD	C		F	H	Kg
1/4	NPT1/8	<b>3821 56 11</b>	10	26	0.009
	NPT1/4	<b>3821 56 14</b>	14	27	0.016
3/8	NPT1/4	<b>3821 60 14</b>	19	32	0.018
	NPT3/8	<b>3821 60 18</b>	19	32	0.028
1/2	NPT1/4	<b>3821 62 14</b>	19	36	0.020
	NPT3/8	<b>3821 62 18</b>	19	37	0.025
1/2	NPT1/2	<b>3821 62 22</b>	22	37	0.042

5/32" (4 mm) and 5/16" (8 mm) also available

## 3831 Stud Standpipe, Male BSPP and Metric Thread

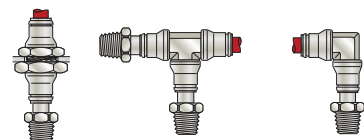
Stainless steel 316L, FKM



ØD	C		F	H	Kg
4	M5x0.8	<b>3831 04 19</b>	10	23.5	0.004
	G1/8	<b>3831 04 10</b>	13	22	0.008
6	G1/8	<b>3831 06 10</b>	13	24	0.009
	G1/4	<b>3831 06 13</b>	17	24	0.015
8	G1/8	<b>3831 08 10</b>	13	25	0.010
	G1/4	<b>3831 08 13</b>	17	27	0.019
10	G3/8	<b>3831 08 17</b>	21	27	0.024
	G1/4	<b>3831 10 13</b>	17	32	0.021
12	G3/8	<b>3831 10 17</b>	21	32	0.025
	G1/4	<b>3831 12 13</b>	17	33	0.021
12	G3/8	<b>3831 12 17</b>	21	33	0.028
	G1/2	<b>3831 12 21</b>	24	36	0.043

Stud standpipe 3821 and 3831 can be used as illustrated, allowing:

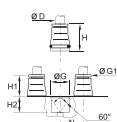
- stock optimisation
- installation of tees and elbows where required



# LF 3800 Push-In Fittings / Stud Fittings

## 3800 Cartridge

Stainless steel 316L, FKM

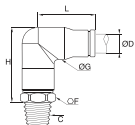


ØD		G	G1	H	H1	H2	N	Kg
4	<b>3800 04 00</b>	9.8	8	17	8.5	8.5	11	0.006
6	<b>3800 06 00</b>	12.1	10	19	10.5	8.5	13.5	0.008
8	<b>3800 08 00</b>	14.8	13	21	12.5	8.5	16	0.012
10	<b>3800 10 00</b>	17.5	15	24.5	14	10.5	20	0.019

Cavity dimensions available on request

## 3809 Stud Elbow, Male BSPT Thread

Stainless steel 316L, FKM

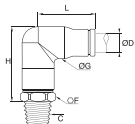


ØD	C		F	G	H	L	Kg
4	R1/8	<b>3809 04 10</b>	10	10	23.5	16.5	0.020
	R1/8	<b>3809 06 10</b>	13	12	27.5	20	0.030
6	R1/4	<b>3809 06 13</b>	14	12	27.5	25	0.036
	R1/8	<b>3809 08 10</b>	14	15	32	25	0.040
8	R1/4	<b>3809 08 13</b>	14	14.5	34	25	0.045
	R1/4	<b>3809 10 13</b>	19	17.5	37.5	27.5	0.068
10	R3/8	<b>3809 10 17</b>	19	17.5	37.5	27.5	0.069

The body swivels for positioning purposes.

## 3809 Stud Elbow, Male NPT Thread

Stainless steel 316L, FKM

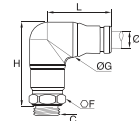


ØD	C		F	G	H	L	Kg
6	NPT1/8	<b>3809 06 11</b>	13	12.5	29	22.5	0.031
	NPT1/4	<b>3809 06 14</b>	14	12.5	29	22.5	0.036
8	NPT1/8	<b>3809 08 11</b>	14	15	34	24	0.040
	NPT1/4	<b>3809 08 14</b>	14	15	34	24	0.045
10	NPT1/4	<b>3809 10 14</b>	19	17.5	39.5	30	0.068
	NPT3/8	<b>3809 10 18</b>	19	17.5	39.5	30	0.071

The body swivels for positioning purposes.

## 3899 Stud Elbow, Male BSPP and Metric Thread

Stainless steel 316L, FKM

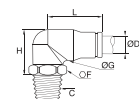


ØD	C		F	G	H	L	Kg
4	M5x0.8	<b>3899 04 19</b>	10	10	26	18	0.020
	G1/8	<b>3899 04 10</b>	13	10	27	19	0.022
	G1/4	<b>3899 04 13</b>	17	10	27	19	0.018
6	M5x0.8	<b>3899 06 19</b>	13	12	33	24	0.031
	G1/8	<b>3899 06 10</b>	6	12	33	24	0.031
	G1/4	<b>3899 06 13</b>	17	12	32	24	0.036
8	G1/8	<b>3899 08 10</b>	14	15	35	25	0.039
	G1/4	<b>3899 08 13</b>	17	15	35	25	0.044
	G3/8	<b>3899 08 17</b>	21	15	34.5	25	0.048
10	G1/4	<b>3899 10 13</b>	19	17	43	31	0.069
	G3/8	<b>3899 10 17</b>	21	17	42	31	0.072

The body swivels for positioning purposes.

## 3889 Compact Stud Elbow, Male BSPT Thread

Stainless steel 316L, FKM

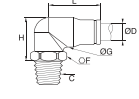


ØD	C		F	G	H	L	Kg
4	R1/8	<b>3889 04 10</b>	13	10	18	17	0.019
	R1/4	<b>3889 04 13</b>	17	10	19.5	16.5	0.018
6	R1/8	<b>3889 06 10</b>	13	12	21.5	20.5	0.025
	R1/4	<b>3889 06 13</b>	14	12	21.5	20.5	0.032
8	R1/8	<b>3889 08 10</b>	14	15	24	22	0.036
	R1/4	<b>3889 08 13</b>	14	15	24	22	0.036
10	R1/4	<b>3889 10 13</b>	17	17.5	28.5	27.5	0.058
	R3/8	<b>3889 10 17</b>	19	17.5	28.5	27.5	0.068
12	R1/4	<b>3889 12 13</b>	22	20	33.5	30	0.088
	R3/8	<b>3889 12 17</b>	22	20	33.5	30	0.090
	R1/2	<b>3889 12 21</b>	22	20	33.5	33	0.097

The body swivels for positioning purposes. Max. 20 bar

## 3889 Compact Male Stud Elbow, Male NPT Thread

Stainless steel 316L, FKM



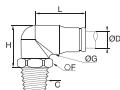
ØD	C		F	G	H	L	Kg
4	NPT1/8	<b>3889 04 11</b>	13	10	17.5	19	0.019
6	NPT1/8	<b>3889 06 11</b>	13	12.5	20	22.5	0.026
	NPT1/4	<b>3889 06 14</b>	14	12.5	20	22.5	0.033
8	NPT1/8	<b>3889 08 11</b>	13	15	25	24	0.036
	NPT1/4	<b>3889 08 14</b>	14	15	24	24	0.036
10	NPT1/4	<b>3889 10 14</b>	17	17.5	27.5	27.5	0.059
	NPT3/8	<b>3889 10 18</b>	19	17.5	28.5	26.5	0.068
12	NPT1/4	<b>3889 12 14</b>	22	20	31.5	32.5	0.086
	NPT3/8	<b>3889 12 18</b>	22	20	32.5	32.5	0.089
	NPT1/2	<b>3889 12 22</b>	22	20	27.5	32.5	0.098

The body swivels for positioning purposes. Max. 20 bar

# LF 3800 Push-In Fittings / Stud Fittings

## 3889 Compact Stud Elbow, Male NPT Thread Inch

Stainless steel 316L, FKM

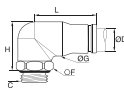


ØD	C		F	G	H	L	Kg
1/4	NPT1/8	<b>3889 56 11</b>	13	12	22	23	0.025
	NPT1/4	<b>3889 56 14</b>	14	12	22	23	0.032
3/8	NPT1/4	<b>3889 60 14</b>	17	17.5	28	30.5	0.058
	NPT3/8	<b>3889 60 18</b>	19	17.5	28	30.5	0.066
1/2	NPT1/4	<b>3889 62 14</b>	22	20	34	33	0.089
	NPT3/8	<b>3889 62 18</b>	22	20	34	33	0.089
	NPT1/2	<b>3889 62 22</b>	22	20	27	33	0.091

The body swivels for positioning purposes. Max. 20 bar.  
5/32" (4 mm) and 5/16" (8 mm) also available.

## 3879 Compact Stud Elbow, Male BSPP Thread

Stainless steel 316L, FKM

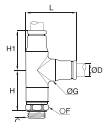


ØD	C		F	G	H	L	Kg
4	G1/8	<b>3879 04 10</b>	13	11	22	19	0.022
	G1/4	<b>3879 04 13</b>	17	11	20	19	0.027
6	G1/8	<b>3879 06 10</b>	13	12	24	24	0.029
	G1/4	<b>3879 06 13</b>	17	12	22	24	0.034
8	G1/8	<b>3879 08 10</b>	13	15	25	25	0.035
	G1/4	<b>3879 08 13</b>	17	15	25	25	0.039
	G3/8	<b>3879 08 17</b>	21	15	23	25	0.047
10	G1/4	<b>3879 10 13</b>	18	17	28.5	31	0.057
	G3/8	<b>3879 10 17</b>	21	17	28.5	31	0.065
12	G1/4	<b>3879 12 13</b>	17	20	33	33	0.077
	G3/8	<b>3879 12 17</b>	21	20	33	33	0.084
	G1/2	<b>3879 12 21</b>	24	20	30	33	0.096

The body swivels for positioning purposes. Max. 20 bar

## 3893 Stud Run Tee, Male BSPP and Metric Thread

Stainless steel 316L, FKM



ØD	C		F	G	H	H1	L	Kg
8	G3/8	<b>3893 08 17</b>	21	15	27	25	35.5	0.094

The body swivels for positioning purposes.

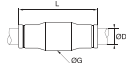
LF 3800 push-in fittings allow connection with several types of Parker tubing shown in Chapter 3 of this catalogue, "Technical Tubing and Hose":

- PFA tubing
- Fluoropolymer tubing
- Polyethylene tubing
- Semi-rigid polyamide and flexible Crystal polyurethane tubing

# LF 3800 Push-In Fittings / Tube-to-Tube Fittings

## 3806 Equal Tube-to-Tube Connector

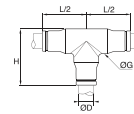
Stainless steel 316L, FKM



ØD		G	L	Kg
4	<b>3806 04 00</b>	10	29	0.009
6	<b>3806 06 00</b>	12	34	0.015
8	<b>3806 08 00</b>	15	36	0.019
10	<b>3806 10 00</b>	17.5	45	0.032
12	<b>3806 12 00</b>	20	46.5	0.040

## 3804 Equal Tee

Stainless steel 316L, FKM

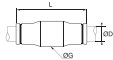


ØD		G	H	L/2	Kg
4	<b>3804 04 00</b>	10	22	19	0.020
6	<b>3804 06 00</b>	12	26	24	0.031
8	<b>3804 08 00</b>	15	29.5	25	0.040
10	<b>3804 10 00</b>	17.5	36.5	31	0.063
12	<b>3804 12 00</b>	20	40	33	0.087

## 3806 Equal Tube-to-Tube Connector

Inch

Stainless steel 316L, FKM



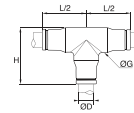
ØD		G	L	Kg
3/16	<b>3806 55 00</b>	11	31	0.010
1/4	<b>3806 56 00</b>	12	36	0.015
3/8	<b>3806 60 00</b>	17	47	0.030
1/2	<b>3806 62 00</b>	20	48	0.039

5/32" (4 mm) and 5/16" (8 mm) also available

## 3804 Equal Tee

Inch

Stainless steel 316L, FKM

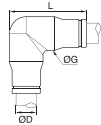


ØD		G	H	L/2	Kg
1/4	<b>3804 56 00</b>	12	30	23	0.031
3/8	<b>3804 60 00</b>	17	38	29	0.059
1/2	<b>3804 62 00</b>	20	43	33	0.088

5/32" (4 mm) and 5/16" (8 mm) also available

## 3802 Equal Elbow

Stainless steel 316L, FKM

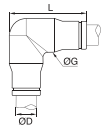


ØD		G	L	Kg
4	<b>3802 04 00</b>	10	21.5	0.015
6	<b>3802 06 00</b>	12	26.5	0.024
8	<b>3802 08 00</b>	15	29.5	0.031
10	<b>3802 10 00</b>	17.5	36.5	0.050
12	<b>3802 12 00</b>	20	40	0.071

## 3802 Equal Stud Elbow

Inch

Stainless steel 316L, FKM



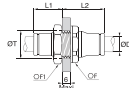
ØD		G	L	Kg
1/4	<b>3802 56 00</b>	12	29	0.023
3/8	<b>3802 60 00</b>	17	38	0.047
1/2	<b>3802 62 00</b>	20	43	0.071

5/32" (4 mm) and 5/16" (8 mm) also available

# LF 3800 Push-In Fittings

## 3816 Equal Bulkhead Connector

Stainless steel 316L, FKM

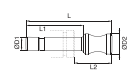


ØD		F	F1	L1	L2	ØT	Kg
4	<b>3816 04 00</b>	13	14	13.5	19.5	13	0.017
6	<b>3816 06 00</b>	17	17	16.5	21.5	14	0.027
8	<b>3816 08 00</b>	19	19	18	24	16	0.034
10	<b>3816 10 00</b>	22	22	21.5	27.5	21	0.048
12	<b>3816 12 00</b>	24	24	24	29	23	0.059

IP55 sealing

## 3826 Blanking Plug

Stainless steel 316L

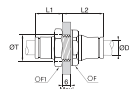


ØD1	ØD2		L	L1	L2	Kg
4	6	<b>3826 04 00</b>	25	17	11	0.003
6	8	<b>3826 06 00</b>	30.4	19.5	13.5	0.007
8	10	<b>3826 08 00</b>	33	20	14	0.014
10	12	<b>3826 10 00</b>	40	25	17	0.025
12	14	<b>3826 12 00</b>	43	26	19	0.039

## 3816 Equal Bulkhead Connector

Inch

Stainless steel 316L, FKM



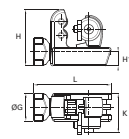
ØD		F	F1	L1	L2	ØT	Kg
3/16	<b>3816 55 00</b>	17	13	15	18	12.5	0.017
1/4	<b>3816 56 00</b>	19	17	19	21	15	0.027
3/8	<b>3816 60 00</b>	22	22	22	27	21	0.052
1/2	<b>3816 62 00</b>	27	27	25	28	25	0.076

IP55 sealing

5/32" (4 mm) and 5/16" (8 mm) also available

## 3800 Pre-Grooving Tool for Metallic Tubing

Treated steel

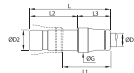


	G	H	H1	K	L	Kg
<b>3800 70 00</b>	25	51	13	36	70	0.326

This tool correctly pre-grooves 4-12 mm O.D. and 3/16"-1/2" O.D. stainless steel tubing, to ensure that the LF 3800 collet grips the tube securely.

## 3866 Push-In Reducer

Stainless steel 316L, FKM



ØD1	ØD2		G	L	L1	L2	L3	Kg
4	6	<b>3866 04 06</b>	10	35	19	19	16	0.008
4	8	<b>3866 04 08</b>	10	34	17	20	14	0.011
6	8	<b>3866 06 08</b>	12	42	24	23	19	0.015
6	10	<b>3866 06 10</b>	12	41	19	25	16	0.019
8	10	<b>3866 08 10</b>	15	45	22.5	25	20	0.021
8	12	<b>3866 08 12</b>	15	43	20	26	17	0.025
10	12	<b>3866 10 12</b>	17	50	23	26	24	0.029