



# MINI•BON

---

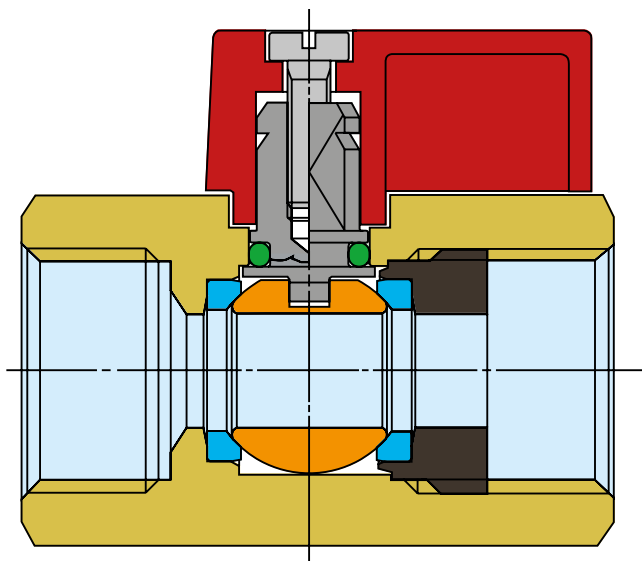
MINI VALVOLA A SFERA  
*MINI BALL VALVE*



# MINI•BON

Mini valvola a sfera  
Mini ball valve

APPROVATA EN 13828 / APPROVED TO EN 13828



## NOTE

In accordo alla UNI EN 13828 in presenza di acque aggressive per la lega di ottone, in ottemperanza alla UNI EN ISO 6509, è necessario l'utilizzo della lega di ottone antidezincificante. La produzione è disponibile su richiesta.

## NOTE

According to UNI EN 13828 in presence of water which could be aggressive for brass alloy, as agree with UNI EN ISO 6509 standard, is necessary the DZR brass alloy. The manufacture is available on request.

## SPECIFICA MATERIALI / MATERIAL SPECIFICATION

PARTICOLARI / COMPONENT	MATERIALI / MATERIAL	DESCRIZIONE / DESCRIPTION
1 <b>CORPO</b> <b>BODY</b>	CW 614 N UNI EN 12165 CW 614 N UNI EN 12165	DA BARRA, CROMATO MACHINED, CHROME-PLATED
2 <b>MANICOTTO</b> <b>END ADAPTER</b>	CW 614 N UNI EN 12164 CW 614 N UNI EN 12164	DA BARRA MACHINED
3 <b>SFERA</b> <b>BALL</b>	CW 614 N UNI EN 12164 CW 614 N UNI EN 12164	DA BARRA, CROMATA MACHINED, CHROME-PLATED
4 <b>SEDI LATERALI</b> <b>BALL GASKETS</b>	P.T.F.E. P.T.F.E.	VERGINE PURE
5 <b>PERNO</b> <b>STEM</b>	CW 614 N UNI EN 12164 CW 614 N UNI EN 12164	DA BARRA MACHINED
6 <b>O-RING</b> <b>O-RING</b>	ELASTOMERO ELASTOMER	ADATTO ALL'USO PER ACQUA SUITABLE FOR USE WITH WATER
7 <b>LEVETTA</b> <b>LEVER HANDLE</b>	NYLON RINFORZATO VETRO GLASS-FILLED NYLON	- -
8 <b>VITE</b> <b>SCREW</b>	ACCIAIO 8G 8G STEEL	ZINCATA ZINC-PLATED

## MINI•BON CARATTERISTICHE

Disegno compatto, passaggio ridotto.

### FILETTATURE

Estremità filettate UNI ISO 228/1.

### IMPIEGHI

Le valvole a sfera **MINI•BON** sono adatte per l'uso con acqua calda e fredda, aria compressa, olii e idrocarburi in generale.

### PRESSIONE DI ESERCIZIO

PN 10.

Vedere diagramma pressione/temperatura.

### LIMITI DI TEMPERATURA

-10°C +90°C.

Vedere diagramma pressione/temperatura.

## MINI•BON FEATURES

Compact design, reduced bore.

### END CONNECTIONS

Ends are UNI ISO 228/1 threaded.

### USES

**MINI•BON** ball valves are suitable for applications with hot or cold water, compressed air, oils and hydrocarbons in general.

### WORKING PRESSURE

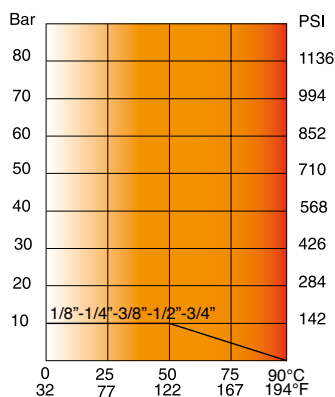
PN 10.

See pressure/temperature diagram.

### TEMPERATURE LIMITS

From -10°C to + 90°C.

See pressure/temperature diagram.

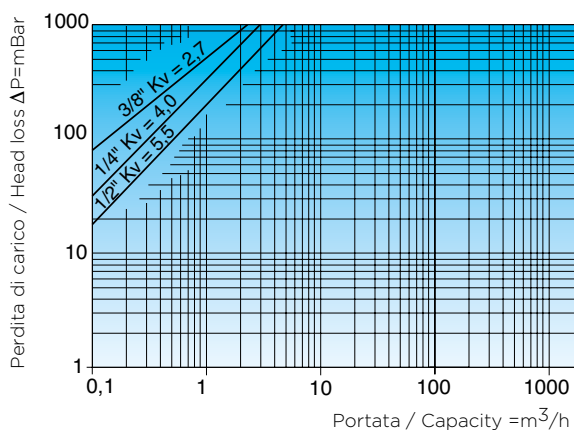


**Diagramma pressione/temperatura**

(prova eseguita con acqua)

**Pressure/temperature diagram**

(tested with water)



**Diagramma perdite di carico**

**Loss of head diagram**

# MINI•BON

Mini valvola a sfera  
Mini ball valve

## Art. S.0330 MINI•BON

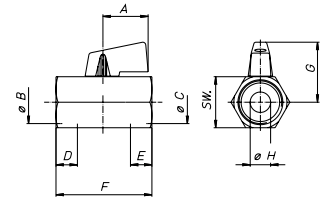
ERAC



SIZE	1/8"	1/4"	3/8"	1/2"	3/4"				
A mm	22	22	22	22	22				
øB	G.1/8"	G.1/4"	G.3/8"	G.1/2"	G.3/4"				
øC	G.1/8"	G.1/4"	G.3/8"	G.1/2"	G.3/4"				
D mm	9	8,7	12	12	14,5				
E mm	10	10	10	11,5	12				
F mm	39	39	42	47	54				
G mm	27	27	27	29	32				
øH mm	8	8	8	10	13,5				
SW mm	20	20	20	24	30				

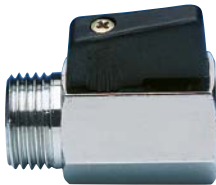
Valvole a sfera con levetta, femmina/femmina, cromata.

*Ball valve with lever, female/female, chrome-plated.*



## Art. S.0331 MINI•BON

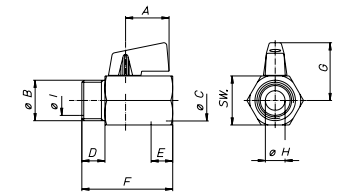
ERAC



SIZE	1/8"	1/4"	3/8"	1/2"	3/4"				
A mm	22	22	22	22	22				
øB	G.1/8"	G.1/4"	G.3/8"	G.1/2"	G.3/4"				
øC	G.1/8"	G.1/4"	G.3/8"	G.1/2"	G.3/4"				
D mm	9	9	10	12,2	14				
E mm	10	9	10	11,5	12				
F mm	39	39	40	45	51				
G mm	27	27	27	29	32				
øH mm	5	8	8	10	13,5				
øI mm	6	8,2	12,2	15	18				
SW mm	20	20	20	24	30				

Valvole a sfera con levetta, maschio/femmina, cromata.

*Ball valve with lever, male/female, chrome-plated.*



## Art. S.0332 MINI•BON

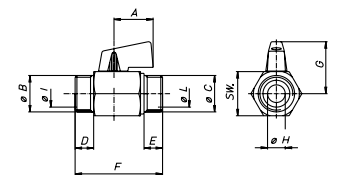
ERAC



SIZE	1/4"	3/8"	1/2"						
A mm	22	22	22						
øB	G.1/4"	G.3/8"	G.1/2"						
øC	G.1/4"	G.3/8"	G.1/2"						
D mm	9	10	10,5						
E mm	9	10	10,5						
F mm	40,4	42,4	50						
G mm	27	27	29						
øH mm	8	8	10						
øI mm	8,2	12,2	15						
øL mm	8,2	12,2	15						
SW mm	20	20	24						

Valvole a sfera con levetta, maschio/maschio, cromata.

*Ball valve with lever, male/male, chrome-plated.*



## Art. S.0333 MINI•BON

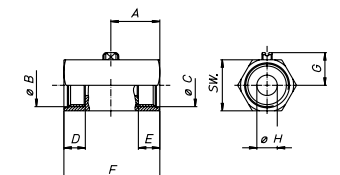
ERAC



SIZE	1/8"	1/4"	3/8"	1/2"	3/4"				
A mm	21	18	21	24	27				
øB	G.1/8"	G.1/4"	G.3/8"	G.1/2"	G.3/4"				
øC	G.1/8"	G.1/4"	G.3/8"	G.1/2"	G.3/4"				
D mm	9	9	10	10,5	14,5				
E mm	10	9	9	10,5	12				
F mm	39	39	42	47	54				
G mm	12,9	12,5	12,5	14,5	17,5				
øH mm	8	8	8	10	13,5				
SW mm	20	21	21	25	30				

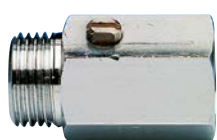
Valvola a sfera, manovra con cacciavite, femmina/femmina, cromata.

*Ball valve, maneuver with screwdriver, female/female, chrome-plated.*



**Art. S.0334** MINI•BON

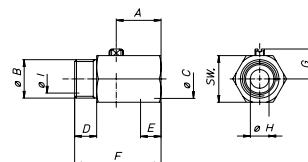
ERC



SIZE	1/8"	1/4"	3/8"	1/2"	3/4"
A mm	18	18	21	24	27
øB	G.1/8"	G.1/4"	G.3/8"	G.1/2"	G.3/4"
øC	G.1/8"	G.1/4"	G.3/8"	G.1/2"	G.3/4"
D mm	9	9	9	10,5	13,5
E mm	9	9	9	10,5	13,5
F mm	39	39	40	45	51
G mm	12,5	12,5	12,5	14,5	17
øH mm	6	8	8	10	12
øI mm	6	8	12	15	18
SW mm	21	21	21	25	30

Valvola a sfera, manovra con cacciavite, maschio/femmina, cromata.

*Ball valve, maneuver with screwdriver, male/female, chrome-plated.*



**Art. S.0335** MINI•BON

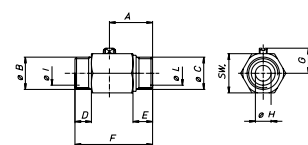
ERC



SIZE	1/4"	3/8"	1/2"
A mm	22	22	24
øB	G.1/4"	G.3/8"	G.1/2"
øC	G.1/4"	G.3/8"	G.1/2"
D mm	9	10	10,5
E mm	9	10	10,5
F mm	40,4	42,4	50
G mm	12,5	12,5	14,5
øH mm	8	8	10
øI mm	8,2	12,2	15
øL mm	8,2	12,2	15
SW mm	20	20	25

Valvola a sfera, manovra con cacciavite, maschio/maschio, cromata.

*Ball valve, maneuver with screwdriver, male/male, chrome-plated.*



**Art. S.1317** MINI•BON•LUX

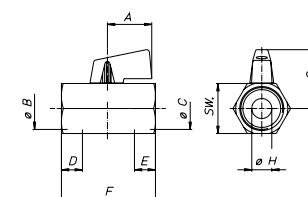
ERC



SIZE	3/8"	1/2"
A mm	22	22
øB	G.3/8"	G.1/2"
øC	G.3/8"	G.1/2"
D mm	10	10,5
E mm	9	10,5
F mm	42	47
G mm	27	29
øH mm	8	10
SW mm	21	25

Valvole a sfera, femmina/femmina, con levetta cromata in alluminio.

*Ball valve, female/female, with chrome-plated lever in aluminium.*



**Art. S.1318** MINI•BON•LUX

ERC



SIZE	3/8"	1/2"
A mm	22	22
øB	G.3/8"	G.1/2"
øC	G.3/8"	G.1/2"
D mm	9	10,5
E mm	9	10,5
F mm	40	45
G mm	27	29
øH mm	8	10
øI mm	12	15
SW mm	21	25

Valvole a sfera, maschio/femmina, con levetta cromata in alluminio.

*Ball valve, male/female, with chrome-plated lever in aluminium.*

