

Vane motors LZB 22

Lubrication free versions LZB 22L

0.16 – 0.25 kW
0.22 – 0.34 hp

For EX certification according to the ATEX directive (Ex II 2G T5 IIC D85°C) use Ordering No. 9834 1108 00 (book as one delivery together with motor).
EX certification valid for fixtured mounted use only.

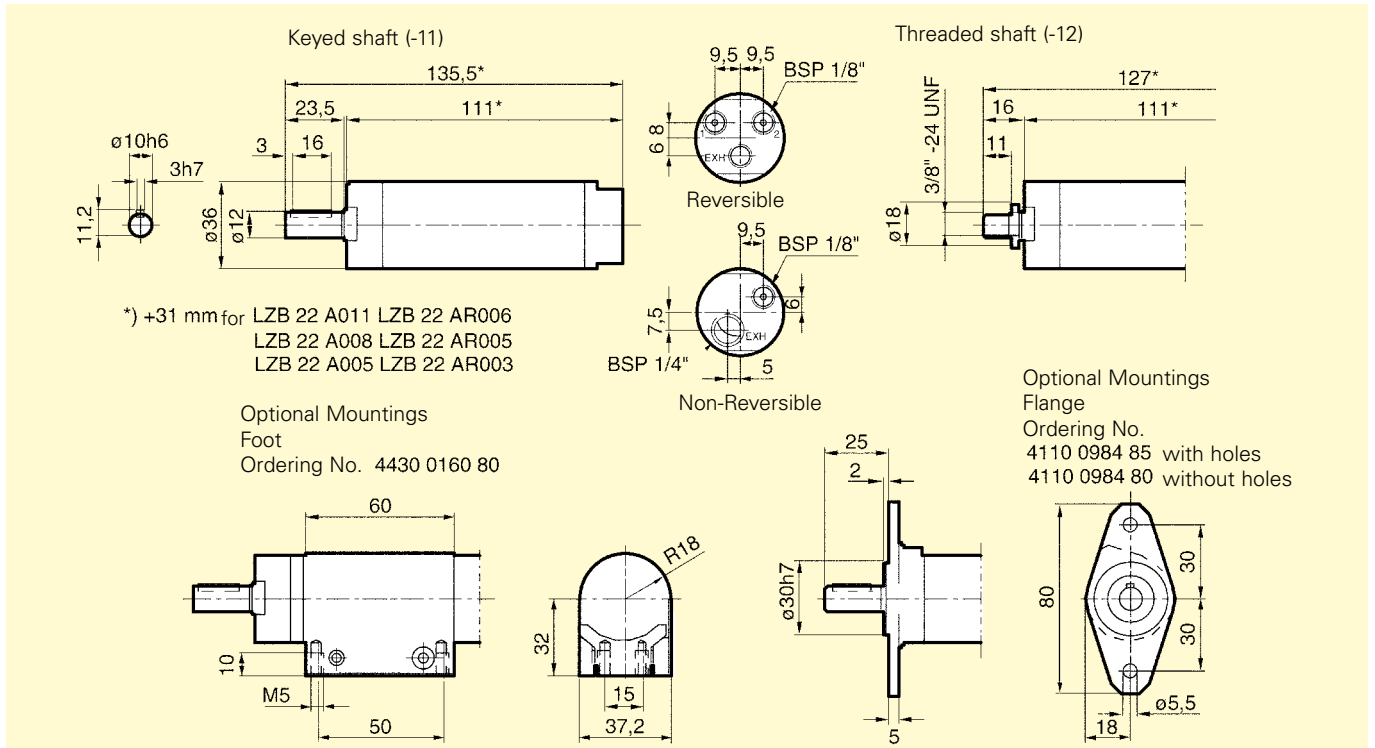


Data at air pressure 6.3 bar (91psi)

Ordering No.						Max output		Speed at max output r/min	Torque at max output		Min starting torque		Free speed r/min	Air cons. at max output		Weight		Shaft loading code ²⁾
Type ¹⁾	Keyed Shaft	Threaded Shaft	Type	Keyed Shaft	Threaded Shaft	kW	hp		Nm	lbf. ft	Nm	lbf.ft		l/s	cfm	kg	lb	
Clockwise rotation																		
Standard						Lubrication free												
LZB 22						LZB 22L												
A220-	8411 0201 37	8411 0202 36	A220-	8411 0214 08	8411 0214 73	0.25	0.34	9600	0.25	0.18	0.45	0.33	21500	5.3	11.2	0.55	1.21	b
A049-	8411 0201 29	8411 0202 28	A049-	8411 0214 16	8411 0214 81	0.25	0.34	2200	1.1	0.81	2.0	1.5	5000	5.3	11.2	0.55	1.21	b
A036-	8411 0201 52	8411 0202 51	A036-	8411 0214 24	8411 0214 99	0.25	0.34	1650	1.5	1.1	2.7	2.0	3750	5.3	11.2	0.55	1.21	b
A022-	8411 0201 11	8411 0202 10	A022-	8411 0214 32	8411 0215 07	0.25	0.34	1040	2.4	1.7	4.5	3.3	2250	5.3	11.2	0.55	1.21	b
A011-	8411 0201 03	8411 0202 02	A011-	8411 0214 40	8411 0215 15	0.24	0.32	535	4.3	3.2	8.0	5.9	1140	5.3	11.2	0.75	1.65	b
A008-	8411 0201 60	8411 0202 69	A008-	8411 0214 57	8411 0215 23	0.24	0.32	380	6.0	4.4	10.5	7.7	850	5.3	11.2	0.75	1.65	b
A005-	8411 0201 45	8411 0202 44	A005-	8411 0214 65	8411 0215 31	0.24	0.32	235	9.9	7.3	17.0	12.5	510	5.3	11.2	0.75	1.65	b
Reversible																		
LZB 22						LZB 22L												
AR126-	8411 0203 35	-	AR126-	8411 0215 49	-	0.16	0.22	6500	0.24	0.18	0.35	0.26	13800	5.0	10.6	0.55	1.21	b
AR028-	8411 0203 27	-	AR028-	8411 0215 56	-	0.16	0.22	1390	1.1	0.81	1.3	0.96	3000	5.0	10.6	0.55	1.21	b
AR021-	8411 0203 68	-	AR021-	8411 0215 64	-	0.16	0.22	1050	1.5	1.1	1.8	1.3	2200	5.0	10.6	0.55	1.21	b
AR013-	8411 0203 19	-	AR013-	8411 0215 72	-	0.16	0.22	650	2.4	1.7	3.0	2.2	1350	5.0	10.6	0.55	1.21	b
AR006-	8411 0203 01	-	AR006-	8411 0215 80	-	0.16	0.22	310	5.0	3.7	5.9	4.4	680	5.0	10.6	0.75	1.65	b
AR005-	8411 0203 50	-	AR005-	8411 0215 98	-	0.16	0.22	240	6.7	4.9	8.0	5.9	500	5.0	10.6	0.75	1.65	b
AR003-	8411 0203 43	-	AR003-	8411 0216 06	-	0.16	0.22	140	10.8	8.0	13.4	9.9	300	5.0	10.6	0.75	1.65	b

¹⁾ Suffix: -11 = Keyed Shaft -12 = Threaded Shaft. ²⁾ For Shaft loading curves, see page 12.
NOTE: The lubrication free motors have 95% of shown free speed.

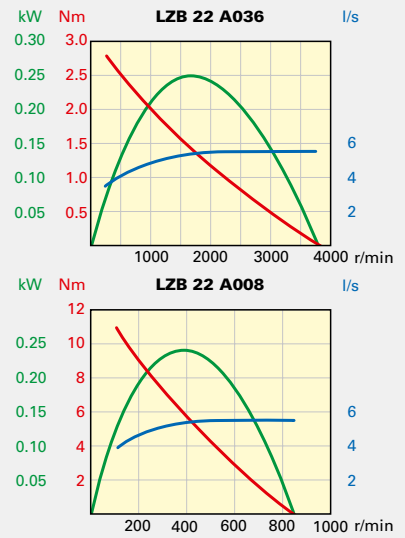
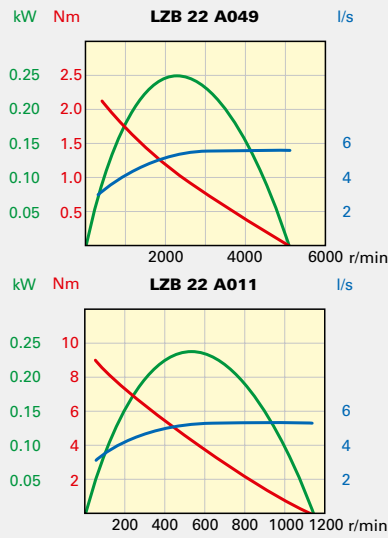
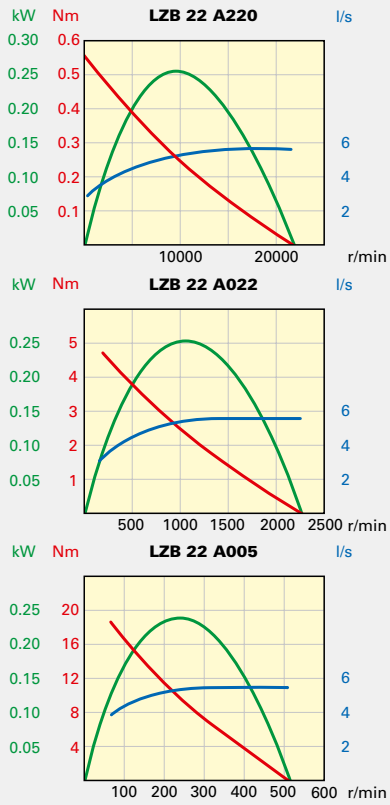
Dimensions (mm)



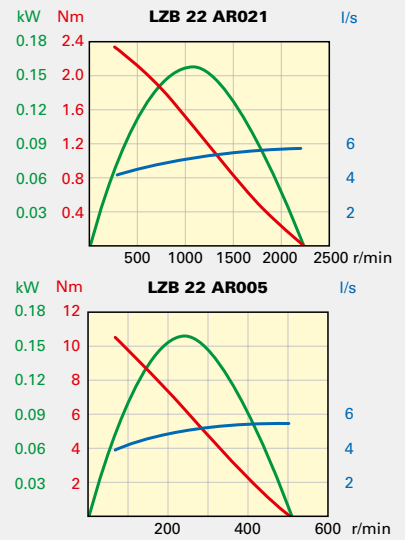
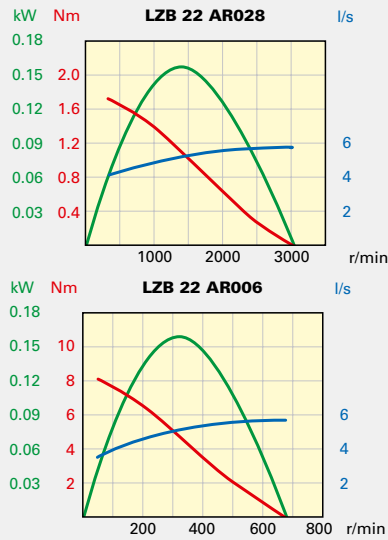
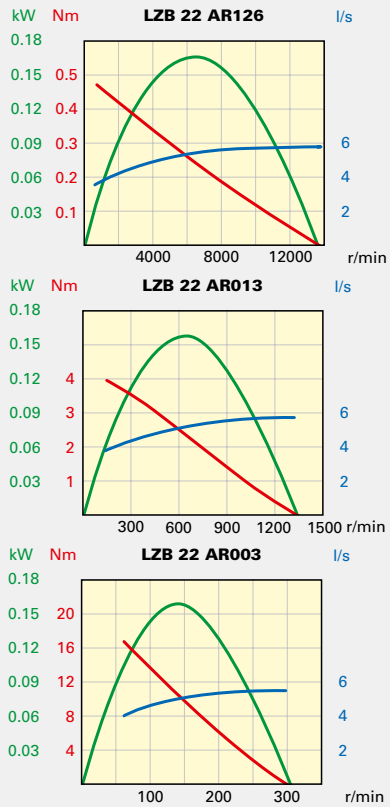
Optional accessories
page 46.

LZB 22, LZB 22R Performance curves at air pressure 6.3 bar (91psi)

Non-Reversible



Reversible



Conversion factors*)
 1 kW = 1.34 hp
 1 Nm = 0.74 lbf - ft
 1 l/s = 2.1 cfm
 1 hp = 0.75 kW
 1 lbf-ft = 1.36 Nm
 1 cfm = 0.47 l/s

*) For more details, see page 7.

For information about performance curves, see page 7.

Stainless steel vane motors LZB 22R Lubrication free versions LZB 22RL

**0.16 – 0.25 kW
0.22 – 0.34 hp**

For EX certification according to the ATEX directive (Ex II 2G T5 IIC D85°C) use Ordering No. 9834 1108 00 (book as one delivery together with motor).

The material used in the back head, casing and front part is stainless steel with the designation: ISO 683/XIII Type 17, SS 14 2346, DIN 17440 X12CrNiS188. The material used in the outgoing shaft and gear rim has the designation: ISO 683/XIII Type 9b, SS 14 2321, DIN 17440 X22CrNi17.



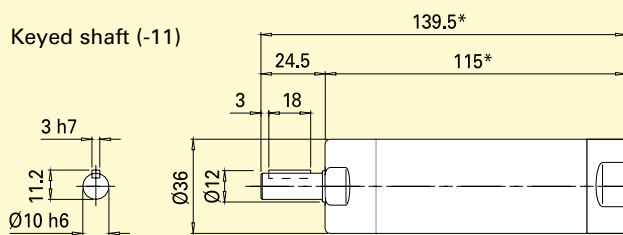
Data at air pressure 6.3 bar (91psi)

Designation Lubricated	Ordering No.	Designation Lubrication free	Ordering No.	Max output		Speed at max output r/min	Torque at max output		Min starting torque		Free speed r/min	Air cons. at max output		Weight		Shaft loading code ¹⁾
				kW	hp		Nm	lbf. ft	Nm	lbf. ft		l/s	cfm	kg	lb	
Clockwise rotation																
LZB 22R				LZB 22RL												
A220-11	8411 0217 05	A220-11	8411 0219 11	0.25	0.34	9600	0.25	0.18	0.45	0.33	21500	5.3	11.2	0.63	1.21	b
A049-11	8411 0217 13	A049-11	8411 0219 29	0.25	0.34	2200	1.1	0.81	2.0	1.5	5000	5.3	11.2	0.63	1.21	b
A036-11	8411 0217 21	A036-11	8411 0219 37	0.25	0.34	1650	1.5	1.1	2.7	2.0	3750	5.3	11.2	0.63	1.21	b
A022-11	8411 0217 39	A022-11	8411 0219 45	0.25	0.34	1040	2.4	1.7	4.5	3.3	2250	5.3	11.2	0.63	1.21	b
A011-11	8411 0217 47	A011-11	8411 0219 52	0.24	0.32	535	4.3	3.2	8.0	5.9	1140	5.3	11.2	0.83	1.65	b
A008-11	8411 0217 54	A008-11	8411 0219 60	0.24	0.32	380	6.0	4.4	10.5	7.7	850	5.3	11.2	0.83	1.65	b
A005-11	8411 0217 62	A005-11	8411 0219 78	0.24	0.32	235	9.9	7.3	17.0	12.5	510	5.3	11.2	0.83	1.65	b
Reversible																
LZB 22R				LZB 22RL												
AR126-11	8411 0218 79	AR126-11	8411 0220 83	0.16	0.22	6500	0.24	0.18	0.35	0.26	13800	5.0	10.6	0.63	1.21	b
AR028-11	8411 0218 61	AR028-11	8411 0220 75	0.16	0.22	1390	1.1	0.81	1.3	0.96	3000	5.0	10.6	0.63	1.21	b
AR021-11	8411 0219 03	AR021-11	8411 0222 16	0.16	0.22	1050	1.5	1.1	1.8	1.3	2200	5.0	10.6	0.63	1.21	b
AR013-11	8411 0218 53	AR013-11	8411 0220 67	0.16	0.22	650	2.4	1.7	3.0	2.2	1350	5.0	10.6	0.63	1.21	b
AR006-11	8411 0218 46	AR006-11	8411 0220 59	0.16	0.22	310	5.0	3.7	5.9	4.4	680	5.0	10.6	0.83	1.65	b
AR005-11	8411 0218 95	AR005-11	8411 0222 08	0.16	0.22	240	6.7	4.9	8.0	5.9	500	5.0	10.6	0.83	1.65	b
AR003-11	8411 0218 87	AR003-11	8411 0220 91	0.16	0.22	140	10.8	8.0	13.4	9.9	300	5.0	10.6	0.83	1.65	b

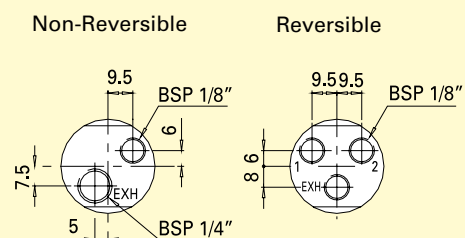
¹⁾ For Shaft loading curves, see page 12.

Performance curves are given on page 19. NOTE: The lubrication free motors have 95% of shown free speed.

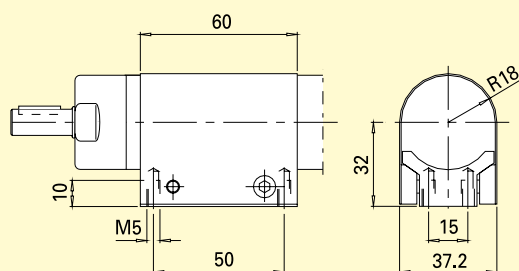
Dimensions (mm)



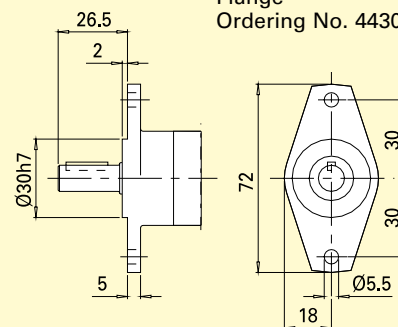
* +31.2 mm for LZB 22R A011 LZB 22R AR006
LZB 22R A008 LZB 22R AR005
LZB 22R A005 LZB 22R AR003



Optional Mounting
Foot
Ordering No. 4430 0862 80



Optional Mounting
Flange
Ordering No. 4430 0861 80



Vane motors LZB 22 LR, LZB 22R LR

Low speed reversible

Maximum permitted torque 9 Nm (6.6 lbf.ft).

For EX certification according to the ATEX directive (Ex II 2G T5 IIC D85°C) use Ordering No. 9834 1108 00 (book as one delivery together with motor). EX certification for LZB 22 LR valid for fixtured mounted use only. Within their working range these motors have a very steep torque curve. Speed and air consumption is relatively constant regardless of the load.

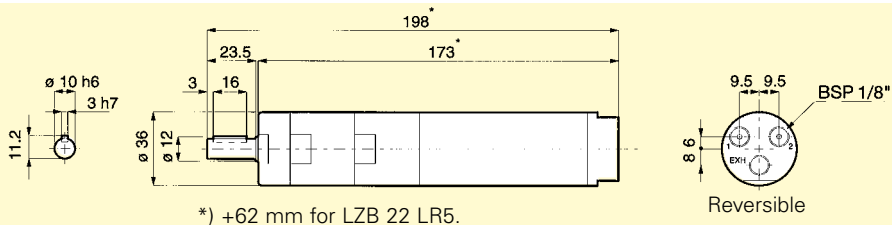


Data at air pressure 6.3 bar (91psi)

Designation Lubricated	Ordering No.	Designation Lubrication free	Ordering No.	Free speed r/min	Air consumption		Weight		Shaft loading code ¹⁾
					l/s	cfm	kg	lb	
LZB 22 LR100-11	8411 0212 18	LZB 22L LR100-11	8411 0216 22	100	5.8	12.3	0.95	2.11	b
LZB 22 LR5-11	8411 0212 00	LZB 22L LR5-11	8411 0216 14	5	5.8	12.3	1.35	3.00	b
Stainless steel									
LZB 22R LR100-11	8411 0222 24	LZB 22RL LR100-11	8411 0222 40	100	5.8	12.3	1.03	2.11	b
LZB 22R LR5-11	8411 0222 32	LZB 22RL LR5-11	8411 0222 57	5	5.8	12.3	1.43	3.00	b

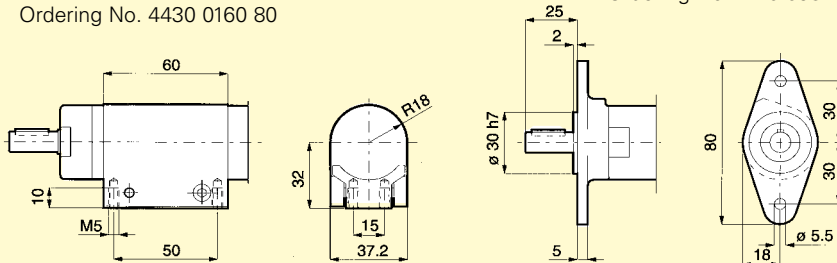
¹⁾ For Shaft loading curves, see page 12.

Dimensions LZB 22 LR (mm)



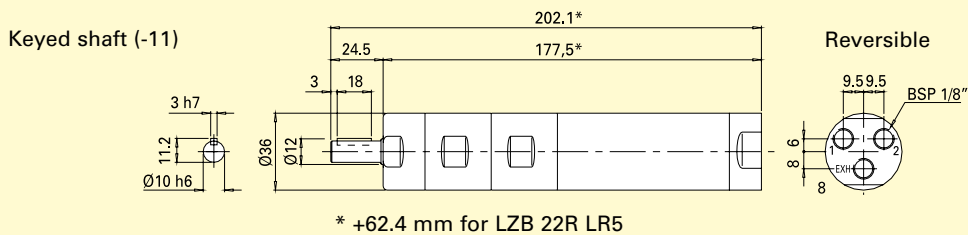
Optional Mountings
Foot for LZB 22 LR
Ordering No. 4430 0160 80

Flange for LZB 22 LR
Ordering No. 4110 0984 85



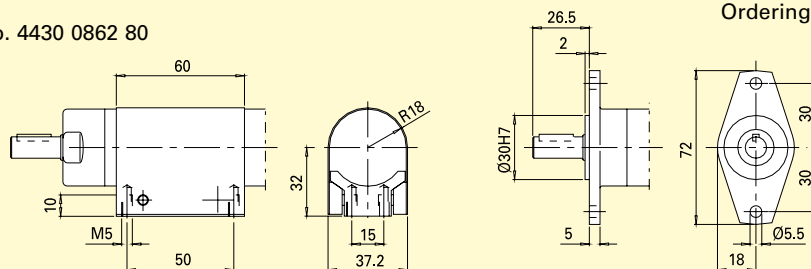
Dimensions LZB 22R LR (mm)

Conversion factor 1mm = 0.04 inch



Optional Mounting
Foot
Ordering No. 4430 0862 80

Optional Mounting
Flange
Ordering No. 4430 0861 80



Optional accessories